

Appendix 1

Safer and Stronger Communities Board (SSCB)

Performance Report

The overall performance of Enfield's SSCB priorities compared to London in the year to end of July 2024



Crime Category KPIs	Enfield			London		
	August 2022 - July 2023	August 2023 - July 2024	Enfield % Change	August 2022 - July 2023	August 2023 - July 2024	London % Change
ASB	8025	7880	-1.8%	221089	226164	2.3%
Hate Crime Offences	610	656	7.5%	23116	24332	5.3%
Domestic Abuse Incidents	4028	3577	-11.2%	93850	86094	-8.3%
<i>Domestic Abuse VWI Offences</i>	1027	917	-10.7%	23077	21571	-6.5%
Knife Crime Offences	560	625	11.6%	13377	14686	9.8%
<i>Knife Crime with Injury Offences</i>	134	165	23.1%	3528	3661	3.8%
<i>Knife Crime With Injury Non DA Victims under 24</i>	57	61	7.0%	1257	1193	-5.1%
Robbery	905	996	10.1%	31407	34815	10.9%
<i>Robbery of Personal Property Offences</i>	830	876	5.5%	28116	29166	3.7%
Violence Against the Person Offences	9138	8772	-4.0%	245304	244300	-0.4%
<i>Non-Domestic Abuse VWI Offences</i>	2852	2651	-7.0%	78791	74250	-5.8%
Gun Crime Offences	63	102	61.9%	1481	1596	7.8%
Burglary	2013	2157	7.2%	55872	55062	-1.4%
<i>Residential Burglary Offences</i>	1441	953	-33.9%	37970	22954	-39.5%
Drug Offences	1264	1115	-11.8%	41449	35115	-15.3%
<i>Drug trafficking Offences</i>	558	483	-13.4%	10331	11236	8.8%
<i>Drug Possession Offences</i>	706	632	-10.5%	31118	23879	-23.3%
Vehicle Offences	5464	4842	-11.4%	107642	104336	-3.1%
<i>Theft from a Motor Vehicle</i>	2868	2380	-17.0%	63137	58457	-7.4%
<i>Theft or Taking of a Motor Vehicle</i>	1951	1849	-5.2%	33207	33203	0.0%
Sexual Offences	781	822	5.2%	24541	24697	0.6%
<i>Rape Offences</i>	290	298	2.8%	8996	8700	-3.3%
TNO	29407	28655	-2.6%	901915	931138	3.2%

Note: this table is based on volume of offences

Priority 1: Tackling violent crime in all its forms

Violence Against the Person Offences and Non-Domestic Abuse Violence with Injury Offences



Violence Against the Person Offences

1

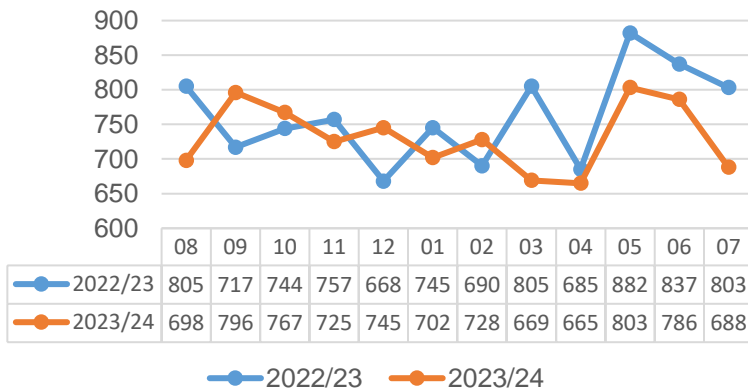
Enfield has seen a 4.0% decrease in VAP offences. London has also seen a decrease of 0.4%

In the 12-month period ending July 2024 there were a total of 8,772 Violence Against the Person offences (VAP) recorded in Enfield, compared with 9,138 offences the previous year, a difference of 366 less offences.

May 2023 saw the highest volume of VAP offences with 882 offences. There was also a significant rise of reported VAP offences in May 2024.

Partnership challenge: to explore the reason for the increase in VAP offences in the month of May for both years.

Number of Violence Against the Person offences



Ward	Percentage increase/decrease
Arnos Grove	8.9%
Bowes	6.0%
Brimmsdown	-4.7%
Bullsmoor	-4.2%
Bush Hill Park	-15.6%
Carterhatch	-0.7%
Cockfosters	-20.5%
Edmonton Green	2.0%
Enfield Lock	-7.5%
Grange Park	-23.2%
Haselbury	-3.3%
Highfield	9.4%
Jubilee	-1.8%
Lower Edmonton	-2.8%
New Southgate	-21.9%
Oakwood	-8.8%
Palmers Green	4.2%
Ponders End	-6.7%
Ridgeway	-4.8%
Southbury	-4.0%
Southgate	-6.3%
Town	-17.9%
Upper Edmonton	-14.0%
Whitewebbs	-16.8%
Winchmore Hill	-8.0%

The table above shows the percentage change of each ward for violence against the person offences. Highfield ward reported the highest percentage increase for VAP offences (9.4%) while Grange Park reported the biggest percentage decrease (23.2%).

Non-Domestic Abuse Violence with Injury Offences

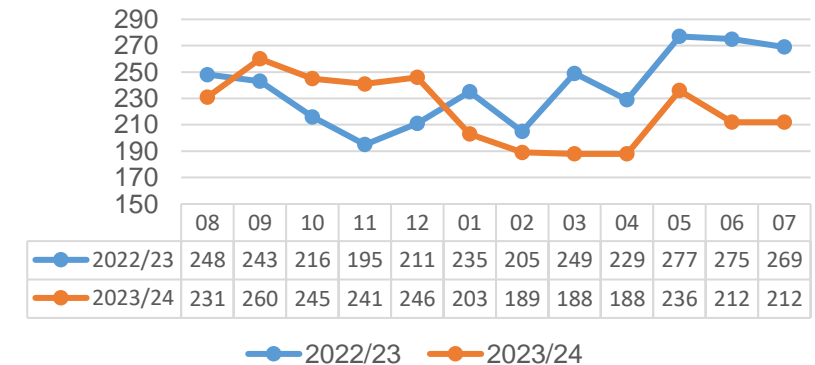
Enfield has seen a higher decrease in Non-Domestic Abuse Violence with Injury offense compared to London. (7.0% decrease in Enfield, 5.8% decrease in London).

In the year ending July 2024 there were 2,651 Non-Domestic Abuse Violence with Injury offences recorded in Enfield a decrease on the 2,852 offences recorded in the previous year.

The line graph below shows the volume of violence with injury offences for the most recent 24-month period. January to July 2023 reported a much higher volume of violence with injury offences than the same period in 2024.

Partnership challenge: why is there a decrease in non-DA VWI for 2024 compared to the previous year?

Number of Violence with Injury offences



1. Violence Against the Person Offences (VAP) includes Minor Categories of Assault with Injury, Common Assault, Harassment, Murder (Homicide), Offensive Weapon, Other Violence and Wounding/GBH. All VAP offences include domestic and non-domestic related assaults.

Priority 1: Tackling violent crime in all its forms

Knife Crime Offences and Knife Crime with Injury Offences



Knife Crime Offences²

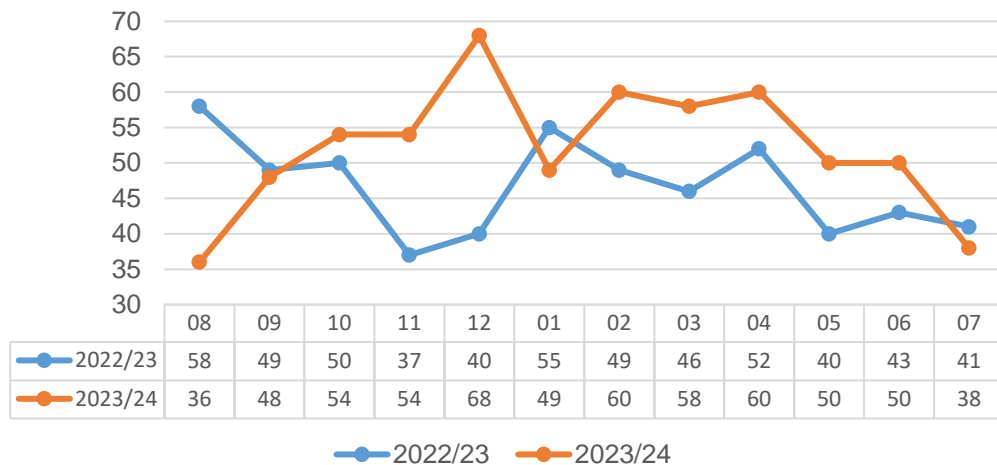
Knife Crime in Enfield has increased by 11.6% while London has experienced an 8.8% increase.

Enfield had reported 65 more offences in 2023/24 (625 offences) compared to 2022/23 (560 offences).

December 2023 reported the highest number of knife crime offences with 68 offences, 28 more offences compared to December 2022. February to June 2024 saw a much higher level of offences when compared to the same period in 2023.

Partnership challenge: what is the reason for the spike in knife crime offences in December 2023? What has contributed to the higher volume of knife crime offences in 2024? But also, what has driven the reduction in knife crime offences since April?

Number of Knife crime offences by month

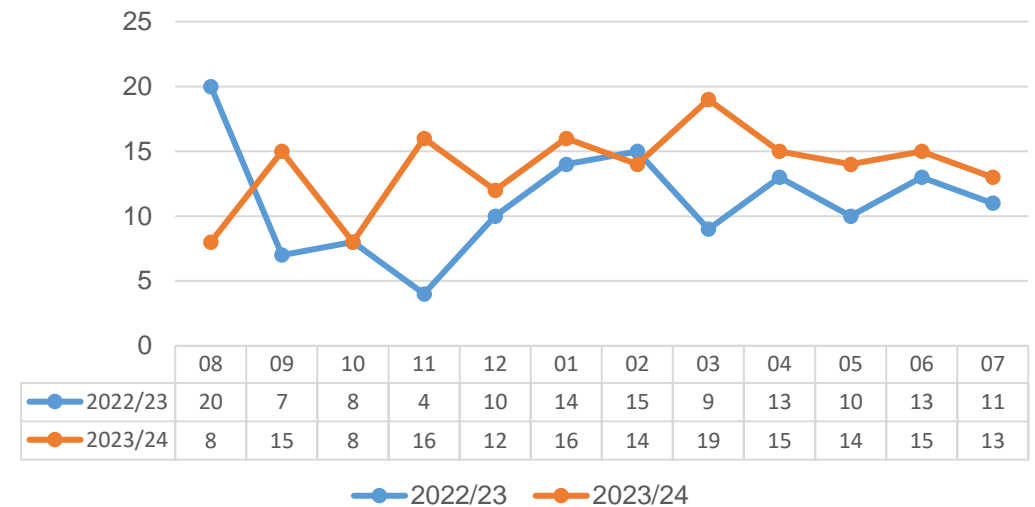


Knife Crime with Injury Offences

Enfield has reported a 23.1% increase in knife crime with injury offences which is a higher increase than seen in London for the same period (3.8%).

Enfield had the highest number of recorded knife crime with injury offences in August 2022 with 20 offences, 11 more than recorded in August 2023. March 2024 saw a slight spike in the number of knife crime offences reported (19 offences). Since March 2024, the volume of knife crime with injury offences has been higher than the volume reported in the same period in 2023.

Number of Knife crime with injury offences by month



² Knife crime is defined in as an offence of homicide, attempted murder, assault with intent to cause harm, assault with injury, threats to kill, sexual offences (including rape) and robbery or where a knife or sharp instrument has been used to injure, used as a threat, or the victim was convinced a knife was present during the offence.

Priority 1: Tackling violent crime in all its forms



Robbery of Personal Property and Gun Crime

Robbery of Personal Property

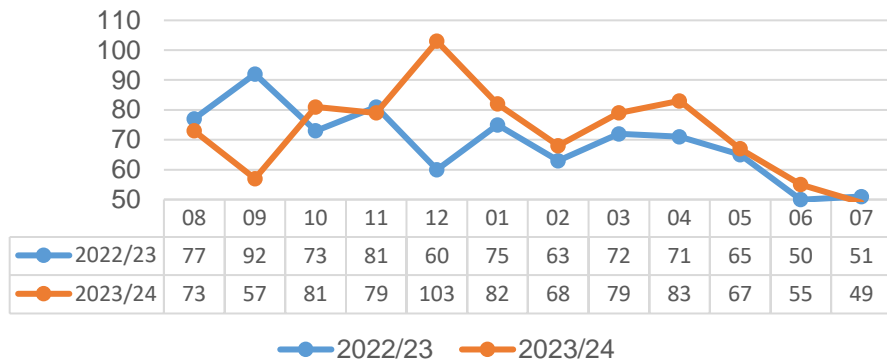
Robbery of personal property has increased by 5.5% in Enfield, slightly higher than the 3.7% increase seen across London.

For the year ending July 2024 there were 876 offences reported an increase of 46 offences compared to 830 offences in 2022/23. Robbery of personal property offences in London increased from 28,116 in 2022/23 to 29,166 in 2023/24.

There was a spike in offences in December 2023 with 103 offences. April 2024 also reported a high level of offences (67). In both years, the number of reported robbery of personal property offences decreases through the summer months.

Partnership challenge: what is the reason for the spike in December 2023? Was this linked to a specific individual/group? What could account for the seasonality trend?

Number of Robbery (Personal Property) Offences by month



Ward	Percentage increase/decrease
Arnos Grove	66.7%
Bowes	42.9%
Brimsdown	-21.6%
Bullsmoor	33.3%
Bush Hill Park	-17.6%
Carterhatch	-24.3%
Cockfosters	-6.7%
Edmonton Green	46.3%
Enfield Lock	-26.8%
Grange Park	54.5%
Haselbury	30.0%
Highfield	-55.0%
Jubilee	47.8%
Lower Edmonton	0.0%
New Southgate	-38.5%
Oakwood	30.8%
Palmers Green	-18.2%
Ponders End	8.0%
Ridgeway	-44.4%
Southbury	-8.5%
Southgate	-21.7%
Town	31.9%
Upper Edmonton	19.2%
Whitewebbs	-18.2%
Winchmore Hill	-7.7%

The table above shows the percentage change of each ward for robbery of personal property offences. Arnos Grove reported the highest percentage increase (66.7%) while Highfield reported the biggest percentage decrease (55.0%).

Gun Crime³

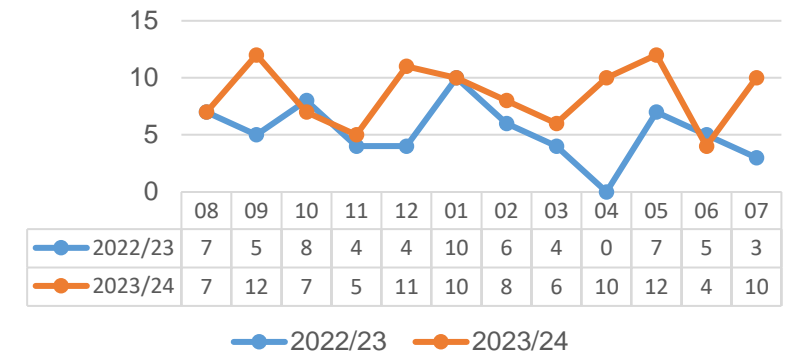
There were 12 reported gun crime offences reported in both September 2023 and May 2024.

Enfield saw an increase in gun crime offences from 63 offences reported in 2022/23 to 102 offences in 2023/24, an increase of 39 more offences. London also experienced an increase in gun crime offences from 1,481 offences in 2022/23 to 1,596 in 2023/24.

March to May 2024 saw a much higher volume of gun crime offences compared to the same period in 2023.

A possible reason for the increase in intimate gun offences for the month of April 2024 could be linked to the increase seen in the number of personal robbery offences.

Number of Gun crime offences by month



Gun Crime is defined as an offence where a Firearm has been fired, any Firearm has been used as a blunt instrument to cause injury to a person, a Firearm has been intimidated and the victim was convinced a weapon was present or a Firearm has been used as a threat.

Priority 3: Reducing Burglary and Keeping People Safe at Home



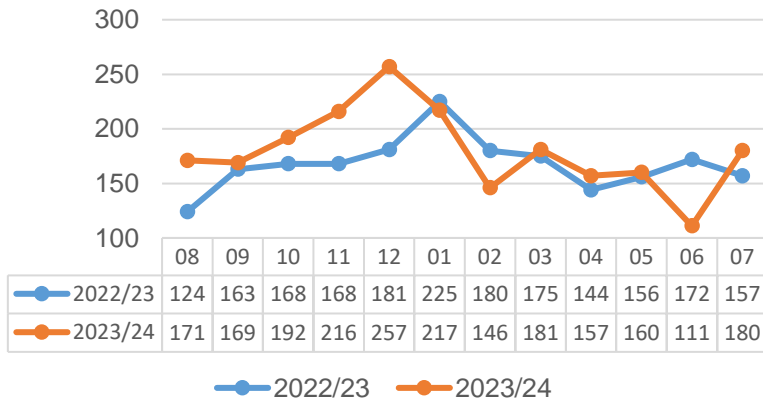
Enfield has seen a 33.9% decrease in the number of residential burglaries while the number of burglaries overall has increased by 7.2%. London has also seen a 39.5% decrease in residential burglaries and a 1.4% decrease in burglaries overall.

Of the 2,157 burglaries reported in Enfield in the 12-month period to July 2024, there were 953 Residential Burglaries.

In both year periods there is a noted increase in the number of burglary offences from August into the autumn and winter months. December 2023 reported the highest number of burglaries with 257 offences.

Partnership challenge: what is driving the reductions in residential burglary?

Number of Burglary offences



Ward	Aug-23	Sep-23	Oct-23	Nov-23	Dec-23	Jan-24	Feb-24	Mar-24	Apr-24	May-24	Jun-24	Jul-24	Total
Edmonton Green	8	9	13	10	9	15	7	7	13	11	1	6	109
Haselbury	11	7	10	13	12	8	3	10	1	6	4	10	95
Brimsdown	12	10	7	10	10	10	10	6	6	4	6	3	94
Lower Edmonton	9	4	9	5	12	9	9	5	12	5	4	11	94
Upper Edmonton	11	6	6	8	8	7	2	9	15	6	3	4	85
Whitewebbs	5	5	5	12	10	14	1	8	8	5	3	4	80
Bush Hill Park	9	7	3	7	8	7	7	10	6	5	1	5	75
Enfield Lock	8	11	8	8	12	3	2	9	4	4	2	3	74
Arnos Grove	3	2	7	6	9	8	3	8	4	7	4	6	67
Town	1	0	4	12	8	8	11	3	6	10	4	0	67
Jubilee	9	3	6	6	3	6	5	7	8	4	3	2	62
Highfield	3	2	3	10	3	5	2	4	6	8	6	5	57
Bullsmoor	11	4	6	7	6	5	2	3	0	3	5	4	56
Ponders End	4	0	5	3	9	3	2	5	7	10	1	7	56
Southbury	3	5	11	6	6	6	1	5	4	3	2	4	56
Grange Park	1	2	2	5	8	5	9	6	3	5	1	4	51
Carterhatch	4	3	3	6	6	5	6	4	1	7	2	1	48
Ridgeway	3	4	4	10	4	7	2	4	0	1	1	2	42
Palmers Green	3	1	3	7	6	4	0	2	3	6	3	3	41
Southgate	2	1	4	3	8	6	2	6	2	1	3	2	40
Bowes	1	2	3	5	2	8	1	5	2	3	1	2	35
New Southgate	1	8	4	2	1	3	2	4	2	4	1	2	34
Winchmore Hill	1	2	2	3	5	1	3	1	5	1	4	4	32
Cockfosters	1	0	1	2	6	2	3	3	1	0	1	4	24
Oakwood	5	1	1	2	4	3	2	0	3	2	1	0	24

The top 5 safer neighbourhood areas for residential burglary in 2023/24 were: Edmonton Green, Haselbury, Brimsdown, Lower Edmonton and Upper Edmonton. Both Edmonton Green and Upper Edmonton reported 15 residential burglary offences in January and April 2024, respectively. For the most recent month, Lower Edmonton ward reported 11 offences with Haselbury reporting 10 residential burglary offences.

*not all domestic burglaries disclosed a safer neighbourhood area location

Priority 4: Promoting Cohesion and Tackling Hate Crime



	Enfield		% Difference	London		% Difference
	August 2022 - July 2023	August 2023 - July 2024		August 2022 - July 2023	August 2023 - July 2024	
Racist and Religious Hate Crime	553	586	6.0%	19970	21222	6.3%
Homophobic Hate Crime	59	69	16.9%	3293	3214	-2.4%
Disability Hate Crime	14	19	35.7%	573	561	-2.1%
Transgender Hate Crime	15	8	-46.7%	439	419	-4.6%

Overall, hate crime offences have increased by 7.5% which is similar to the increase seen in London (5.3%). The Israeli-Palestine conflict has contributed to the increased volume of reported hate crime offences.

In the year ending July 2024, Enfield reported 656 offences, an increase of 46 offences compared to the same period the previous year (610 in 2022/23).

September 2023 to January 2024 has seen a significant rise in the number of reported hate crime offences compared to the same period the previous year. October 2023 is the month with the highest number of hate crime offences (60). A reason for the sustained high volume of hate crime offences is the Israeli-Palestine conflict. The increase in the number of reported hate crime offences in March and April may also be due to the increase in right wing rhetoric across Europe as well as the continued conflict in Israel and Palestine.

Racist and religious hate crimes form the majority of hate crime reported in the borough. Both Enfield and London saw an increase in Racist and Religious Hate Crime with an increase of 6.0% and 6.3% respectively.

Homophobic hate crime has seen a 16.9% increase in Enfield. London has seen a 2.4% decrease in this reported hate crime.

There has been a 35.7% increase in disability hate crime recorded in Enfield. London has seen a decrease of 2.1% in this hate crime.

Transgender hate crime has seen a 46.7% decrease in Enfield, a reduction of 7 offences. London also saw a 4.6% decrease in this hate crime.

Number of Hate Crime offences by month

