

Healthy and Safe Scrutiny Committee Crime Performance Update

Total Notifiable Offences* in Enfield decreased by 5.9% in the year ending September 2024 compared to the previous 12 months. London saw a 4.1% decrease over the same period.

The volume of Violence Against the Person (VAP) offences in Enfield has decreased by 4.8% with violence with Injury (VWI) (Non-DA) offences also decreasing by 11.6% over the most recent 12month period. London saw a decrease in VAP offences (2.7% decrease in VAP, 10% decrease in VWI (Non-DA) offences).

Partnership challenge: The reduction on Violence Against the Person and Violence with Injury, coincides with the start of operation Pisces. Further evaluation of the impact will be required. Ownership – Clear hold Build Strategic Board meeting in November

Robbery offences in Enfield have increased by 16.6% in the 12 months ending September 2024, with a 9.9% increase seen in robbery of personal property. London has also experienced an 8.7% increase in robbery offences with robbery of personal property increasing by 1% over the same period.

Partnership challenge: what is the reason for the spike in December 2023? What plans can the partnership put into place to reduce robbery of personal property in December 2024? Ownership – Partnership Tasking and Enforcement Group - 31st October meeting

There was a significant increase in gun crime offences in 2023/24, with offences rising by 52%, while the overall increase across London was nearly 13.2%.

Partnership challenge: What is driving the continued trend in the increase of gun crime offences? Ownership Police Specialist investigations Team (NAVRAG) - 30th October meeting

Knife Crime offences in Enfield has increased by 15% and 9.4% increase in London in the most recent 12month period. Knife crime with injury offences in Enfield increased by 20.8% while a 0.5% decrease was reported in London in the same period.

Partnership challenge - What has contributed to the higher volume of knife crime offences in 2024? But also, what has driven the reduction in knife crime offences since July to August 2023/2024? Ownership Serious violence Intervention Panel and NAVRAG – 30th October for both

Enfield has experienced a 3.7% increase in residential burglary which is reflective of the decrease in London (7%).

Partnership challenge: What action can the partnership take to ensure the increases in residential burglary are not repeated in December 2023. Ownership Police Tactical tasking and Co-ordination Group - 14th November meeting

Enfield has seen a 3.8% decrease in the number of drug offences while London seen a decrease of 13.6%

Partnership Challenge: What is the driving factor behind the increase in drug offences in September 2024? Ownership Enfield Locality Based (CDAP) Criminal Justice Group. Via email.

Domestic abuse incidents have decreased in Enfield by 11.7% in the 12month period to September 2024. Domestic abuse violence with injury offences have also decreased in Enfield by 15.5%. Over the same period domestic abuse incidents and domestic abuse violence with injury offences have decreased by 8.8% and 7.1% respectively in London.

Partnership challenge: What is the cause of the decrease in domestic abuse cases since the beginning of 2024? Ownership DA/VAWG Strategic group – 11th November meeting

OFFICIAL RESTRICTED The overall performance of Enfield's SSCB priorities compared to London in the year to end
of September 2024



Data Source	Crime Category KPIs	Enfield			London		
		October 2022 - September 2023	October 2023 - September 2024	Enfield % Change	October 2022 - September 2023	October 2023 - September 2024	London % Change
MET BOX Data	ASB (Anti-Social Behaviour)	8,357	7,965	-4.7%	230,207	228,236	-0.9%
	Hate Crime Offences	625	661	5.8%	23,633	23,987	1.5%
	Domestic Abuse Incidents	4,032	3,559	-11.7%	102,280	93,241	-8.8%
	<i>Domestic Abuse VWI Offences</i>	1,030	870	-15.5%	25,280	23,490	-7.1%
	Knife Crime Offences	791	910	15.0%	13,693	14,977	9.4%
	<i>Knife Crime with Injury Offences</i>	130	157	20.8%	3,660	3,653	-0.2%
	<i>Knife Crime With Injury Non-DA Victims under 24</i>	50	61	22.0%	1,283	1,193	-7.0%
	Gun Crime Offences	70	106	51.4%	1,441	1,631	13.2%
MPS Monthly Crime Dashboard Data (https://data.london.gov.uk/dataset/mps-monthly-crime-dahboard-data)	Robbery	864	1,007	16.6%	32,257	35,069	8.7%
	<i>Robbery of Personal Property Offences</i>	791	869	9.9%	28,717	28,861	0.5%
	Violence Against the Person Offences (VAP)	9,110	8,671	-4.8%	247,567	240,954	-2.7%
	<i>Non-Domestic Abuse VWI Offences</i>	2,852	2,520	-11.6%	79,434	71,377	-10.1%
	Burglary	2,066	2,130	3.1%	56,446	54,135	-4.1%
	<i>Residential Burglary Offences</i>	1,461	1,515	3.7%	38,373	35,686	-7.0%
	Drug Offences	1,250	1,202	-3.8%	41,252	35,650	-13.6%
	<i>Drug trafficking Offences</i>	585	496	-15.2%	11,034	11,961	8.4%
	<i>Drug Possession Offences</i>	665	706	6.2%	30,218	23,689	-21.6%
	Vehicle Offences	5,483	4,710	-14.1%	106,542	102,182	-4.1%
	<i>Theft from a Motor Vehicle</i>	2,797	2,268	-18.9%	61,755	56,737	-8.1%
	<i>Theft or Taking of a Motor Vehicle</i>	2,000	1,843	-7.9%	33,400	32,935	-1.4%
	Sexual Offences	781	818	4.7%	24,544	24,856	1.3%
	<i>Rape Offences</i>	264	303	14.8%	8,986	8,680	-3.4%
Total number of crimes	46,054	43,347	-5.9%	1,202,002	1,153,180	-4.1%	

Note: this table is based on volume of offences

Priority 1: Tackling violent crime in all its forms



Violence Against the Person Offences and Non-Domestic Abuse Violence with Injury Offences

Violence Against the Person (VAP) Offences¹

Enfield has seen a 4.82% decrease in VAP offences. London has also seen a decrease of 2.7%

In the 12-month period ending September 2024 there were a total of 8,671 Violence Against the Person offences (VAP) recorded in Enfield, compared with 9,110 offences the previous year, a difference of 439 less offences.

May 2023 saw the highest volume of violent offences against the person (VAP), with 882 offences recorded. There was also a significant rise in reported VAP offences in May 2024, reaching 809 offences. August and September 2024 has seen 66 less offences compared to last year, but 89 offences increased compared to August month. Average VAP per month in Calendar year 2023 was 759 and 723 in 2024.

Non-Domestic Abuse Violence with Injury Offences

Enfield has seen a decrease in Non-Domestic Abuse Violence with Injury offence compared to London. (11.64% decrease in Enfield, 10.1% decrease in London).

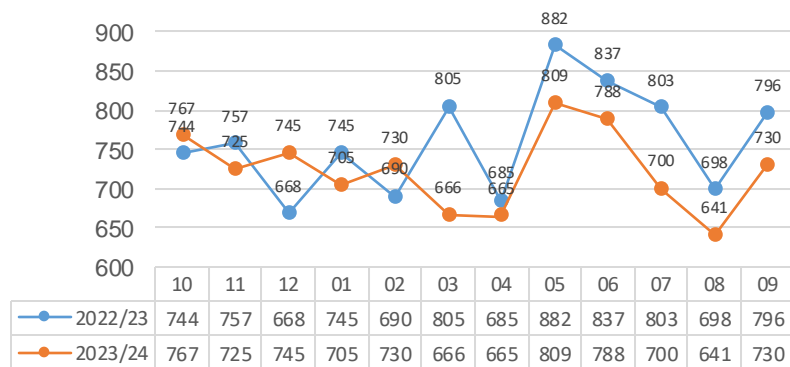
In the year ending September 2024 there were 2,520 Non-Domestic Abuse Violence with Injury offences recorded in Enfield a decrease on the 2,852 offences recorded in the previous year (difference 332).

The graph below shows the volume of VWI offences for the most recent 24-month period. Both years May to Jul period reported a much higher volume of violence. But this trend gradually gone down from August, but bit increase in September in both years. August 2024 show the lowest number of offences (160) over the period, also September recorded significant decrease of 73 offences compared to previous year. Average violence per month in Calendar year 2023 was 238 and 210 in Y2024.

Partnership Challenge – The reduction on Violence Against the Person and Violence with Injury, coincides with the start of operation Pisces. Further evaluation of the impact will be required.

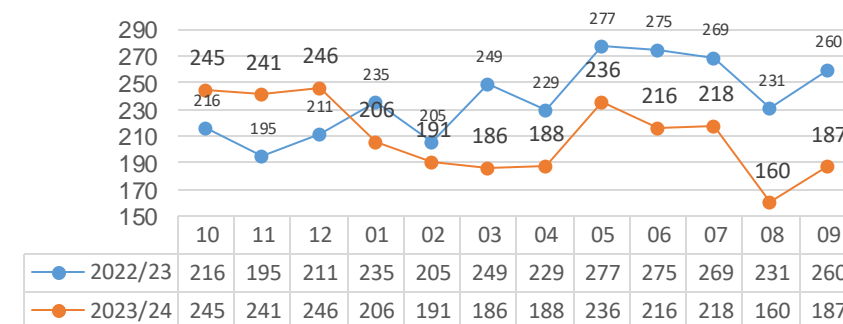
Ward	2022/23 offences	2023/24 offences	Percentage increase/decrease
Arnos Grove	126	128	1.6%
Bowes	232	282	21.6%
Brimmsdown	615	554	-9.9%
Bullsmoor	360	347	-3.6%
Bush Hill Park	164	153	-6.7%
Carterhatch	423	434	2.6%
Cockfosters	163	139	-14.7%
Edmonton Green	777	767	-1.3%
Enfield Lock	621	533	-14.2%
Grange Park	76	64	-15.8%
Haselbury	596	538	-9.7%
Highfield	188	173	-8.0%
Jubilee	446	403	-9.6%
Lower Edmonton	495	493	-0.4%
New Southgate	215	191	-11.2%
Oakwood	107	109	1.9%
Palmers Green	310	300	-3.2%
Ponders End	609	560	-8.0%
Ridgeway	357	356	-0.3%
Southbury	366	361	-1.4%
Southgate	268	251	-6.3%
Town	398	350	-12.1%
Upper Edmonton	692	621	-10.3%
Whitewebbs	376	328	-12.8%
Winchmore Hill	130	121	-6.9%

Number of Violence against the person by volumn



The table above shows the percentage change of each ward for violence against the person offences. **Bowes** ward reported the highest percentage increase for VAP offences (21.6%) while **Grange Park** reported the biggest percentage decrease (15.8%).

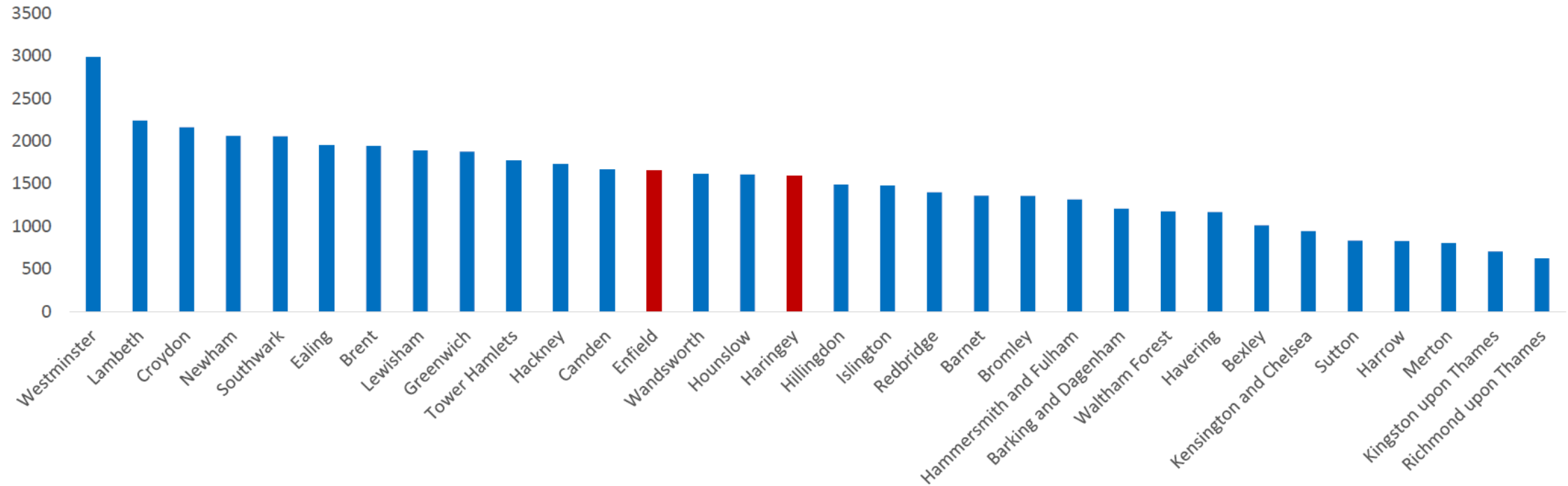
Number of Violence with Injury offences by volumn



1. Violence Against the Person Offences (VAP) includes Minor Categories of Assault with Injury, Common Assault, Harassment, Murder (Homicide), Offensive Weapon, Other Violence and Wounding/GBH. All VAP offences include domestic and non-domestic related assaults.

Non-Domestic Abuse Violence with Injury Offences

Violence with Injury (Non-Domestic) Volume (12-months)



Violence with Injury continues to be a challenge

- Enfield and Haringey are the 13th and 16th most violent boroughs in London respectively.
- Current levels of violence with injury are higher in Enfield than in Haringey.
- The volume of violence recorded in Camden is now higher than Haringey and Enfield

Priority 1: Tackling violent crime in all its forms



Robbery of Personal Property and Gun Crime

Robbery of Personal Property

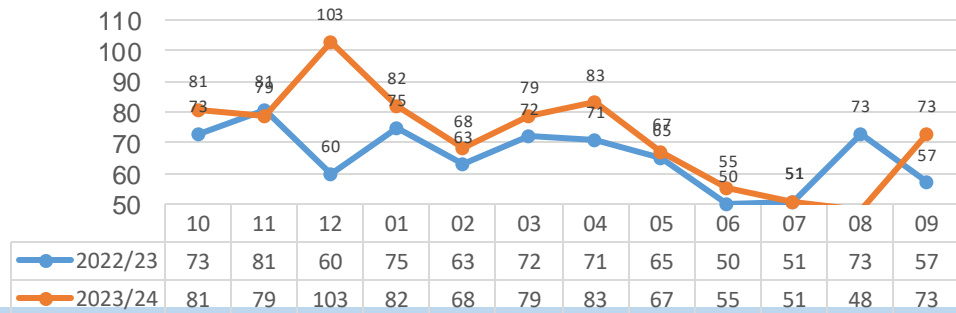
Robbery of personal property offences increased by volume in Enfield by 9.9% and across London are nearly increased by 1%.

For the year ending September 2024 there were 869 offences reported an increase of 78 offences compared to 791 offences in 2022/23. Robbery of personal property offences in London increased from 28,717 in 2022/23 to 28,861 in 2023/24.

There was a spike in offences in December 2023 with 103 offences. April 2024 also reported a high level of offences (83). In both years, the number of reported robbery of personal property offences decreases through the summer months. There appear to have been a change in robbery offences across the two months of August and September 2023, compared to August and September 2024. However, when combining the recorded incidents for both months, there are 9 fewer offences in 2024 (121) compared to 2023 (130).

Partnership challenge: what is the reason for the spike in December 2023? What plans can the partnership put into place to reduce robbery of personal property in December 2024?

Number of Robbery (Personal Property) Offences by month



Ward	2022/23 offences	2023/24 offences	Percentage increase/decrease
Arnos Grove	11	13	18.2%
Bowes	16	15	-6.3%
Brimsdown	59	58	-1.7%
Bullsmoor	24	32	33.3%
Bush Hill Park	14	14	0.0%
Carterhatch	38	27	-28.9%
Cockfosters	17	14	-17.6%
Edmonton Green	76	130	71.1%
Enfield Lock	34	33	-2.9%
Grange Park	11	19	72.7%
Haselbury	37	49	32.4%
Highfield	20	8	-60.0%
Jubilee	27	29	7.4%
Lower Edmonton	46	37	-19.6%
New Southgate	27	14	-48.1%
Oakwood	17	13	-23.5%
Palmers Green	18	19	5.6%
Ponders End	45	51	13.3%
Ridgeway	17	10	-41.2%
Southbury	39	47	20.5%
Southgate	43	37	-14.0%
Town	50	63	26.0%
Upper Edmonton	73	92	26.0%
Whitewebbs	19	17	-10.5%
Winchmore Hill	13	19	46.2%

The table above shows the percentage change of each ward for robbery of personal property offenses. Compared to the volume Edmonton Green recorded the highest, 130 offences, and second highest as Upper Edmonton in 2023/24.

Gun Crime ³

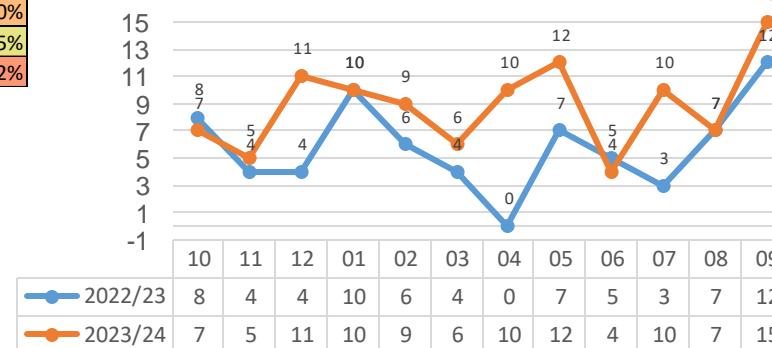
There was a significant increase in gun crime offences in 2023/24, with offences rising by 52%, while the overall increase across London was nearly 13.2%.

Enfield recorded 70 offences in 2022/23 and 106 offences in 2023/24, an increase of 36 more offences. London also experienced an increase (13.2%) in gun crime offences from 1,441 offences in 2022/23 to 1,631 in 2023/24.

April to May 2024 saw a much higher volume of gun crime offences compared to the same period in 2023. A possible reason for the increase in intimated gun offences for the month of April and May 2024 could be linked to the increase seen in the number of robbery and personal robbery offences.

Partnership challenge: What is driving the continued trend in the increase of gun crime offences?

Number of Gun crime offences by month



³ Gun Crime is defined as an offence where a Firearm has been fired, any Firearm has been used as a blunt instrument to cause injury to a person, a Firearm has been intimated and the victim was convinced a weapon was present or a Firearm has been used as a threat.

Priority 1: Tackling violent crime in all its forms



Knife Crime Offences and Knife Crime with Injury Offences

Knife Crime Offences ²

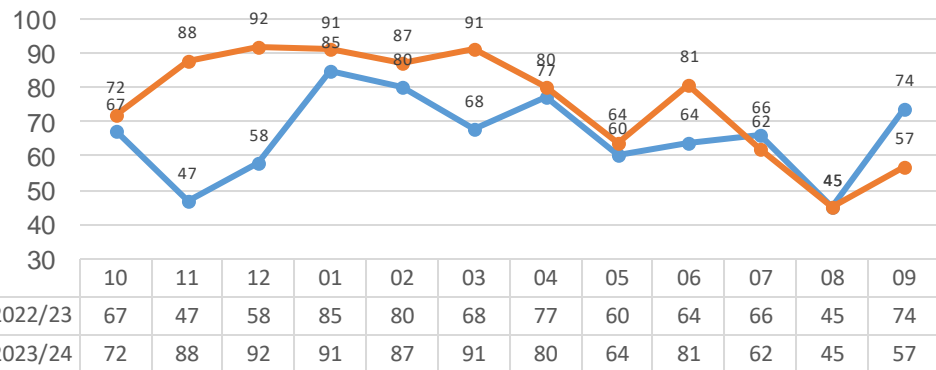
Knife Crime in Enfield has increased by 15% while London has experienced an 9.4% increase.

Enfield had reported 119 more offences in 2023/24 (910 offences) compared to 2022/23 (791 offences).

November to Apr 2023/24 reported the highest number of knife crime offences with 529 total and December 2023 reported 92 offences, 34 more offences compared to December 2022. In both years August showed a significant decrease in Knife crimes with an increase September. Average Knife crime per month in calendar year 2023 was 66 and 76 in 2024.

Partnership challenge: What has contributed to the higher volume of knife crime offences in 2024? But also, what has driven the reduction in knife crime offences since July to August 2023/2024?

Number of Knife crime offences by month

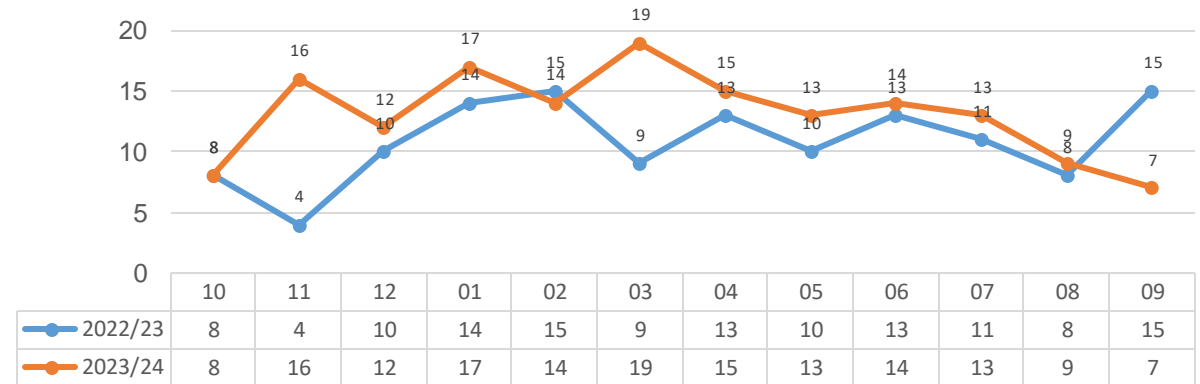


Knife Crime with Injury Offences

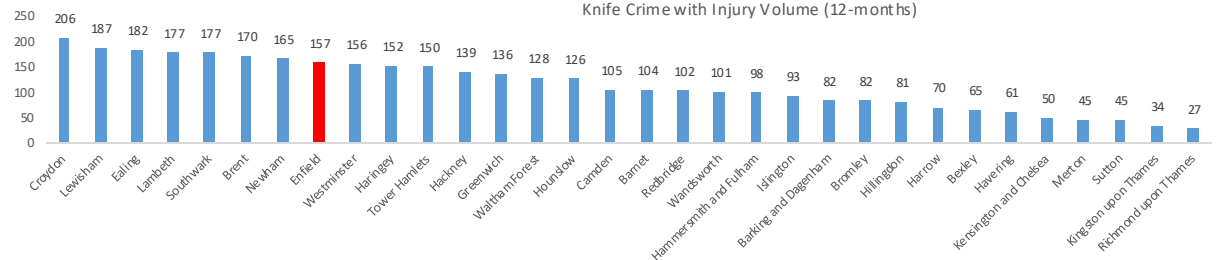
Enfield has reported a 20.8% increase in knife crime with injury offences while London has experienced an 0.2% decrease. Compared to R12 months Enfield are the 8th highest Knife Crime with Injury recorded boroughs in London.

Enfield had the highest number of recorded knife crime with injury offences in March 2024 with 19 offences, 10 more than recorded in March 2023. Between April to September 2024 there has been a continuous reduction of reported Knife Crime with injury offences.

Number of Knife crime with injury offences by month



Knife Crime with Injury Volume (12-months)



² Knife crime is defined in as an offence of homicide, attempted murder, assault with intent to cause harm, assault with injury, threats to kill, sexual offences (including rape) and robbery or where a knife or sharp instrument has been used to injure, used as a threat, or the victim was convinced a knife was present during the offence.

Burglary and Residential Burglary

Burglary

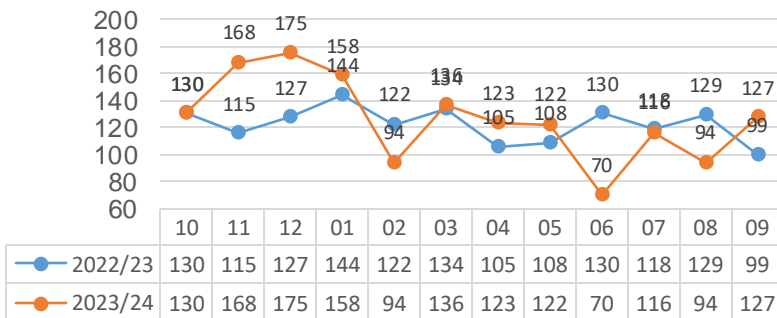
Enfield has seen a 3.6% increase in the number of residential burglaries while the number of burglaries overall has increased by 3.1%. While London has seen a 7% decrease in residential burglaries and a 4.1% decrease in burglaries overall. Out of the 2,130 burglaries reported in Enfield in the last 12 months till Sep 2024, there were 1,513 Residential Burglaries which is 71% from the overall burglaries.

In 2023/24 there is a noted increase in the number of burglary offences in the autumn and winter months. December 2023 reported the highest number of burglaries with 175 offences, 48 higher cases than Dec 2022. Average Burglary per month in in calendar year was 172 and 178 in 2024.

Partnership challenge: What action can the partnership take to ensure the increases in residential burglary are not repeated in December 2023.

Ward	Oct-23	Nov-23	Dec-23	Jan-24	Feb-24	Mar-24	Apr-24	May-24	Jun-24	Jul-24	Aug-24	Sep-24	Total
Edmonton Green	13	10	9	15	7	7	13	11	1	8	6	11	111
Lower Edmonton	9	5	12	9	9	5	12	5	5	12	6	6	95
Brimsdown	7	10	10	10	10	6	6	4	6	3	5	6	83
Haselbury	10	13	12	8	3	10	1	6	4	10	2	4	83
Upper Edmonton	6	8	8	7	2	9	15	6	3	4	1	11	80
Bush Hill Park	3	7	8	7	7	10	6	5	1	5	10	9	78
Whitewebbs	5	12	10	14	1	8	8	5	3	4	2	2	74
Town	4	12	8	8	11	3	6	10	4	0	2	3	71
Arnos Grove	7	6	9	8	3	8	4	7	4	7	4	3	70
Ponders End	5	3	9	3	2	5	7	10	1	9	5	6	65
Enfield Lock	8	8	12	3	2	9	4	4	2	3	5	1	61
Highfield	3	10	3	5	2	4	6	8	6	5	2	6	60
Carterhatch	3	6	6	5	6	4	1	7	3	1	7	9	58
Southbury	11	6	6	6	1	5	4	3	2	6	6	2	58
Grange Park	2	5	8	5	9	6	3	6	1	5	2	2	54
Jubilee	6	6	3	6	5	7	8	4	3	2	1	3	54
Southgate	4	3	8	6	2	6	2	1	3	3	10	6	54
Bullsmoor	6	7	6	5	2	3	0	3	6	4	0	6	48
Palmers Green	3	7	6	4	0	2	3	6	3	4	6	2	46
Winchmore Hill	2	3	5	1	3	1	5	1	4	6	1	8	40
Ridgeway	4	10	4	7	2	4	0	1	1	2	0	4	39
Bowes	3	5	2	8	1	5	2	3	1	2	2	4	38
New Southgate	4	2	1	3	2	4	2	4	1	2	6	3	34
Cockfosters	1	2	6	2	3	3	1	0	1	4	2	6	31
Oakwood	1	2	4	3	2	0	3	2	1	0	0	2	20

Number of Domestic Burglary offences by volumn



The top 5 safer neighbourhood areas for residential burglary in 2023/24 were: Edmonton Green, Lower Edmonton, Brimsdown, Haselbury, and Upper Edmonton. Both Edmonton Green and Upper Edmonton reported 15 residential burglary offences in January and April 2024, respectively. For the most recent month September 2024, Edmonton Green and Upper Edmonton wards reported 11 offences with Carterhatch reporting 9 and Winchmore Hill reported 8 offences.

*not all domestic burglaries disclosed a safer neighbourhood area location.

	Enfield		Total	% Difference	London		Total	% Difference
	October 2022 - Sep 2023	October 2023 - Sep 2024			October 2022 - Sep 2023	October 2023 - Sep 2024		
Racist and Religious Hate Crime	564	601	1,165	6.6%	20,400	21,143	41,543	3.6%
Homophobic Hate Crime	57	67	124	17.5%	3,419	3,010	6,429	-12.0%
Disability Hate Crime	18	13	31	-27.8%	599	523	1,122	-12.7%
Transgender Hate Crime	11	9	20	-18.2%	479	363	842	-24.2%

Overall, hate crime offences have increased by 5.8% in Enfield while London has seen a 1.5% decrease.

In the year ending September 2024, Enfield reported 661 offences, an increase of 36 offences compared to the same period the previous year (625 in 2022/23). Average Hate crime per month in Y2023 was 52 and 55 in Y2024.

March to October 2023 and April to September 2024 has seen a significant rise in the number of reported hate crime offences. March 2023 is the month with the highest number of hate crime offences (70).

Significant incidents, such as the Gaza conflict and rising tensions between religious groups, have likely contributed to the increased volume of hate crimes, particularly with a rise in antisemitic activities.

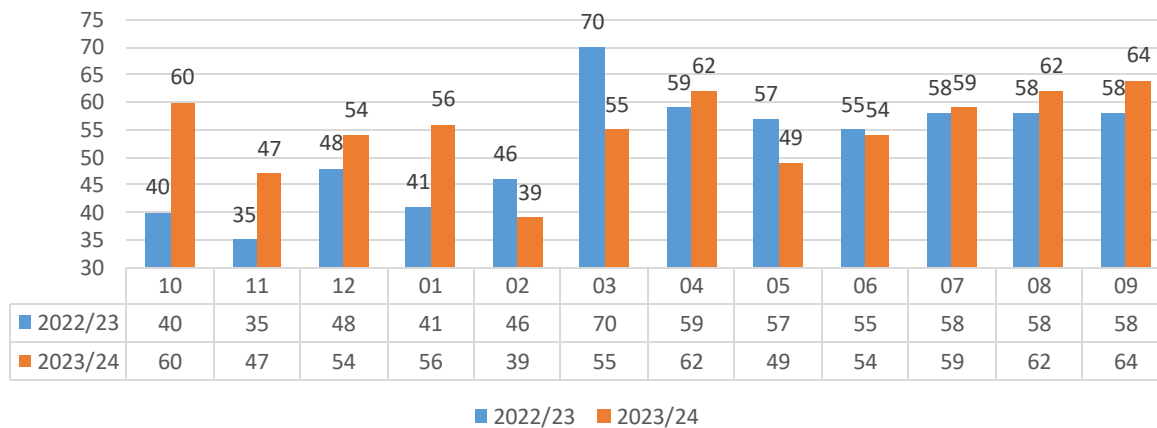
Racist and religious hate crimes form most hate crime reported in the borough. Both Enfield and London saw an increase in Racist and Religious Hate Crime with an **increase of 6.6% and 3.6%** respectively.

Homophobic hate crime has seen a 17.5% increase in Enfield. London has seen a 12% decrease in this reported hate crime.

There has been a 27.8% decrease in disability hate crime recorded in Enfield. London has seen a decrease of 12.7% in this hate crime.

Transgender hate crime has seen a 18.2% decrease in Enfield, a reduction of 2 offences. London saw a significant decrease (24.2%) in this hate crime.

Number of Hate Crime offences in Enfield

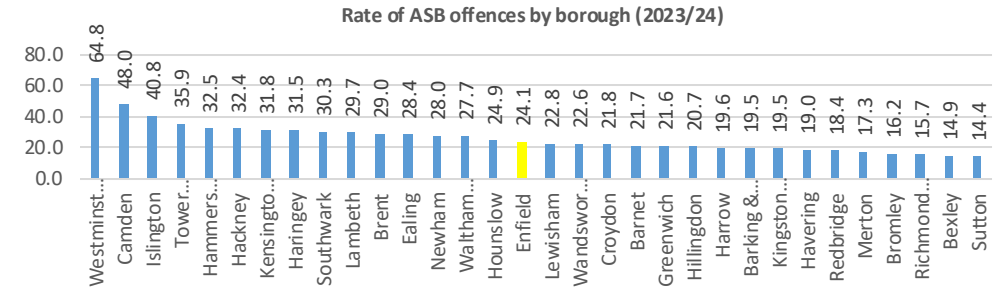


Dealing with Anti-Social Behaviour

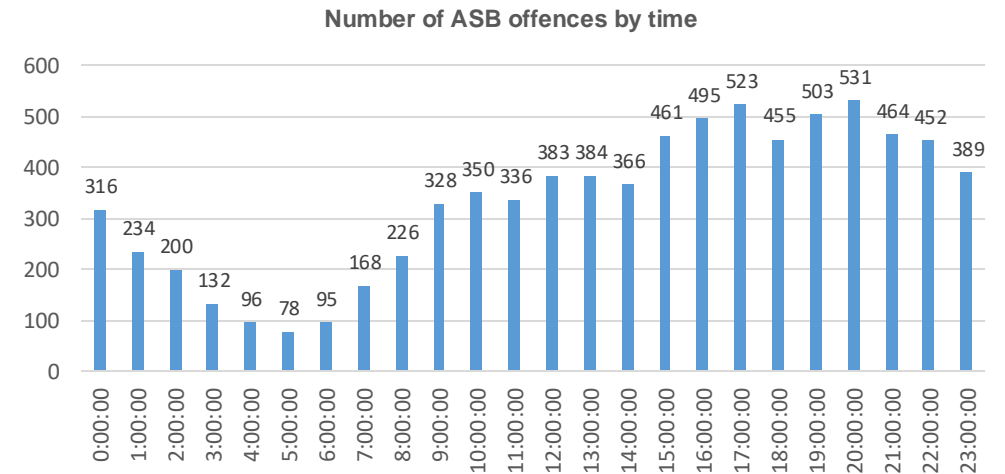
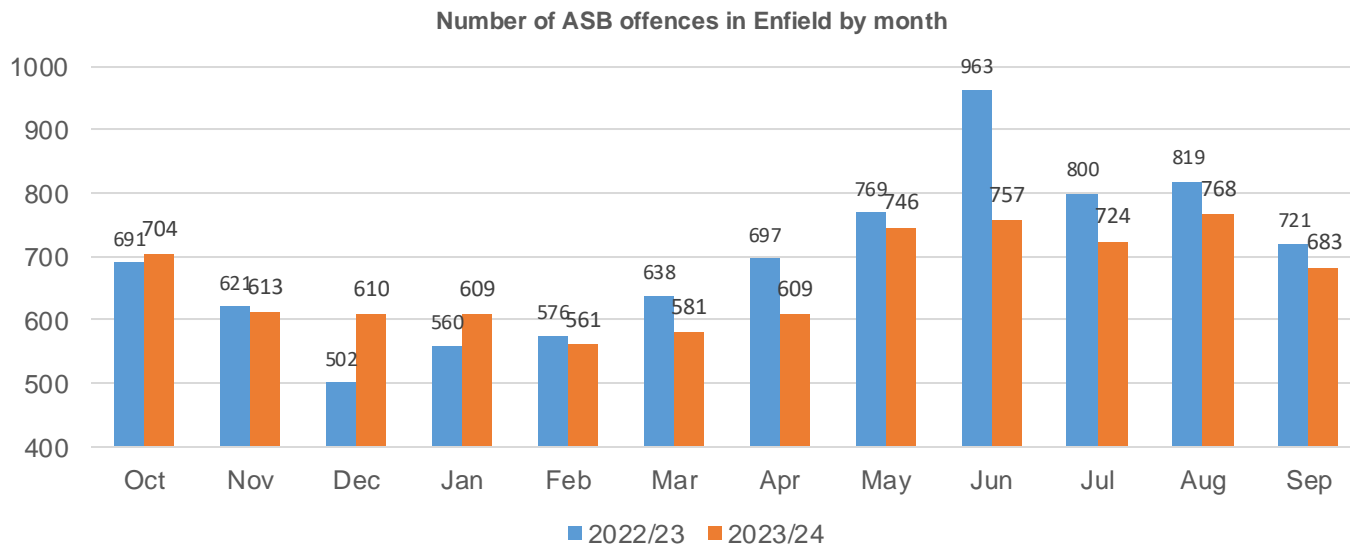


Enfield saw a 4.7% decrease in ASB offences in the year ending September 2024 compared to the previous 12 months (8,357 offences in 2022/23 and 7,965 offences in 2023/24). London saw a 1% decrease in ASB offences compared to the previous year (230,207 offences in 2022/23 and 228,236 offences in 2023/24).

June 2023 saw a peak in the number of reported ASB offences in Enfield however, this peak was not replicated in June 2024 (963 offences reported in June 2023 compared to 757 offences in June 2024). There was a slight increase in August in both years compared to July. It is possible that the longer daylight hours and good weather during the summer months provide more opportunities for social gatherings, which may contribute to an increase in reported ASB offences. Compared to Aug, September has 11% decrease in reported ABS offences.



When considering the populations within each borough, Enfield ranks 16th highest for the rate of ASB offences when compared to the other London boroughs.



In Enfield, the number of reported ASB offences increases over the daytime period with 3.00 PM to 8.00 PM, 8.00 PM reporting the highest number of ASB offences (531). ASB offences were lower during the nighttime and early hours of the morning (2:00 AM to 7:00 AM).

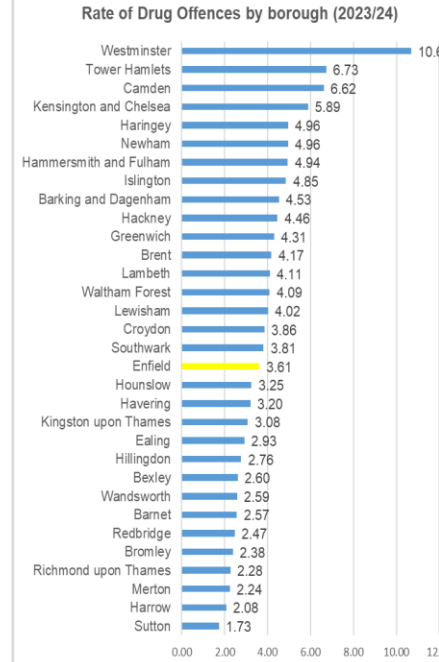
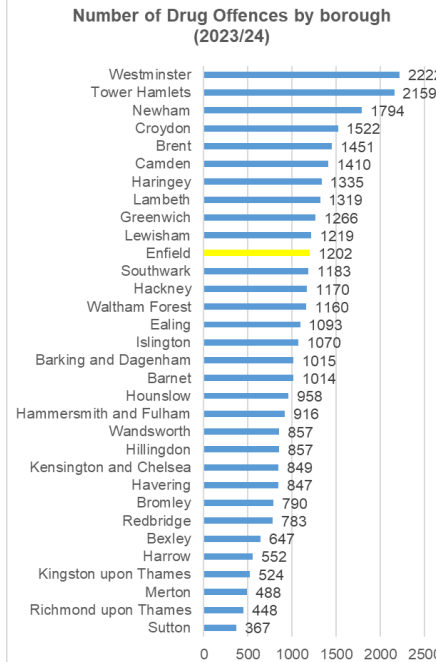
Drug Offences

Drug Offences

Enfield has seen a 3.8% decrease in the number of drug offences while London seen a decrease of 13.6%

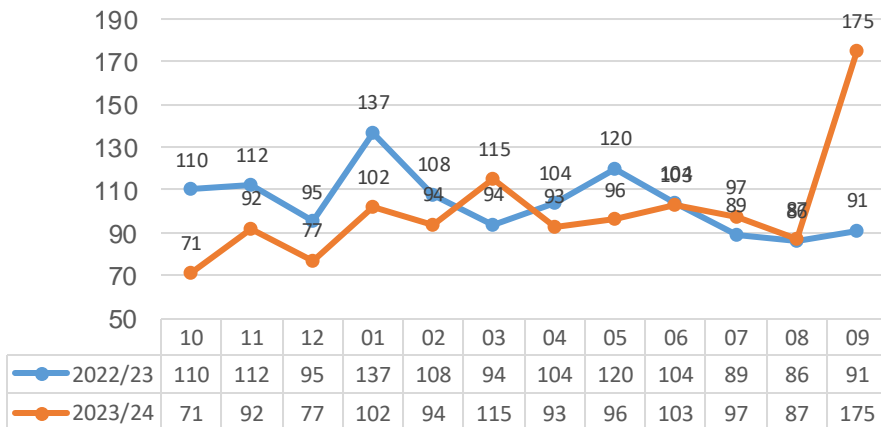
Enfield reported 1,250 drug offenses between October 2023 to September 2024. In 2022/23, Autumn and winter months reported the most number of Drug offences, also May 2023 shows another hike (120). The highest number of reported drug offences occurred in September 2024 with 175 drug offences. The volume of reported drug offences significantly reduced from April to August but increased in September, compared with August 2024. Average amount for last 24-month period were 102 per month.

Partnership Challenge - What is the driving factor behind the increase in drug offences in September 2024?



Ward	Percentage increase/decrease
Arnos Grove	16.7%
Bowes	-36.4%
Brimsdown	-33.0%
Bullsmoor	23.1%
Bush Hill Park	-41.2%
Carterhatch	-22.0%
Cockfosters	20.0%
Edmonton Green	25.9%
Enfield Lock	-20.0%
Grange Park	-60.0%
Haselbury	-5.3%
Highfield	-38.9%
Jubilee	0.0%
Lower Edmonton	1.1%
New Southgate	-31.7%
Oakwood	-16.0%
Palmers Green	-51.2%
Ponders End	11.8%
Ridgeway	-19.2%
Southbury	-30.8%
Southgate	-31.6%
Town	26.1%
Upper Edmonton	44.1%
Whitewebbs	-20.9%
Winchmore Hill	50.0%

Number of Drug Offences by month



Enfield ranks 11th highest volume of reported drug offences compared to the other 32 London boroughs.

However, when taking into account the populations within each borough, Enfield ranks 18th highest for the rate of drug offences when compared to the other London boroughs.

The table shows the percentage change of each ward for drug offences. **Winchmore Hill** reported the highest percentage increase (50%, 14 offences in 2022/23 to 21 offences in 2023/24) while **Grange Park** reported the biggest percentage decrease (60%).

Priority 8: Domestic Abuse, Sexual and Rape Offences



Domestic Abuse Incidents and Domestic Abuse VVI Offences

Domestic Abuse

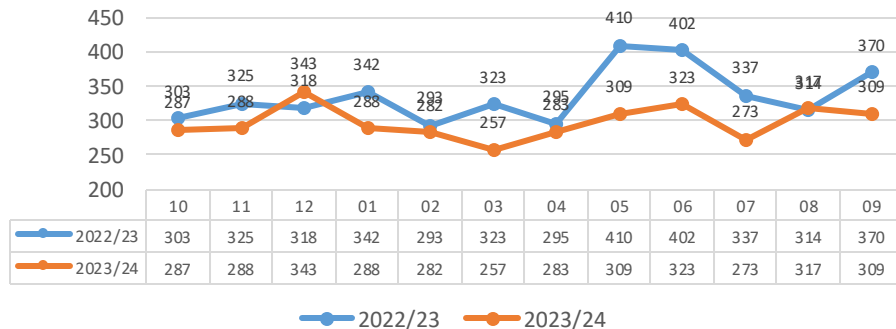
Enfield has seen an 11.7% decrease in the most recent 12-month period. This is similar to the decrease seen in London (8.8%).

There were 3,559 Domestic Abuse offences in Enfield in 2023/24, compared to 4,032 in the previous year.

May and June 2023 saw a significant rise in the number of reported domestic abuse incidents (410 and 402 offences respectively). This was not reflected in the same months in 2024. March 2024 reported the lowest volume of offences (257) a reduction of 66 cases when compared to March 2023. The volume of offences has steadily increased since March 2024 with June 2024 reporting 323 cases. Sep 2024 reported 309 offences, 61 cases decrease compared to September 2023.

Partnership challenge: What is the cause of the decrease in domestic abuse cases since the beginning of 2024?

Number of Domestic Abuse offences by month



Ward	Oct-23	Nov-23	Dec-23	Jan-24	Feb-24	Mar-24	Apr-24	May-24	Jun-24	Jul-24	Aug-24	Sep-24	Total
Edmonton Green	33	18	34	30	20	16	32	15	37	18	28	41	322
Enfield Lock	20	26	30	21	25	20	21	22	42	21	25	35	308
Lower Edmonton	25	34	36	21	26	24	22	27	21	19	25	24	304
Haselbury	32	10	28	25	22	34	23	26	26	28	22	21	297
Brimmsdown	26	17	28	17	22	17	33	25	27	27	27	18	284
Upper Edmonton	23	23	19	20	10	21	18	28	23	25	26	20	256
Ponders End	12	24	22	32	16	19	21	17	20	22	24	19	248
Southbury	16	18	27	17	19	19	22	20	17	18	19	11	223
Jubilee	25	26	19	27	14	10	14	22	20	19	11	15	222
Carterhatch	13	17	13	17	18	14	16	21	13	20	20	28	210
Bowes	13	18	14	18	15	11	19	23	20	21	23	14	209
Bullsmoor	15	17	21	13	21	15	13	23	11	20	19	15	203
Whitewebbs	19	20	12	10	16	20	6	12	7	16	19	13	170
Town	9	9	14	18	5	8	8	12	11	10	20	18	142
Palmers Green	8	11	16	12	8	8	8	20	19	8	10	9	137
Highfield	15	9	10	8	13	12	13	8	11	6	8	7	120
Ridgeway	4	18	12	14	12	4	9	7	7	7	8	16	118
Southgate	14	7	17	5	10	8	4	12	6	7	9	13	112
New Southgate	11	15	10	8	4	5	8	4	13	6	15	11	110
Bush Hill Park	11	10	7	8	10	6	7	3	4	6	7	11	90
Winchmore Hill	13	3	8	5	13	9	5	11	8	4	3	3	85
Arnos Grove	10	4	7	7	3	5	10	4	4	6	2	4	66
Cockfosters	2	8	10	9	10	5	4	4	4	1	2	6	65
Oakwood	0	1	4	3	7	4	8	8	9	5	4	3	56
Grange Park	4	2	7	0	2	3	9	4	8	0	0	2	41

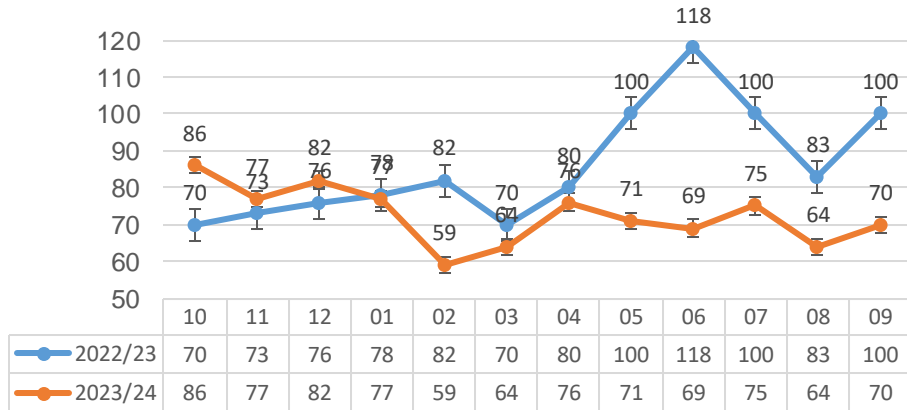
The top 5 safer neighbourhood areas were: Edmonton Green, Enfield Lock, Lower Edmonton, Haselbury and Brimmsdown. June 2024 recorded 42 offences in Enfield Lock ward. September 2024 reported 41 offences in Edmonton Green, 35 offences recorded in Enfield Lock ward, also 28 in Carterhatch. *not all domestic abuse offences disclosed a safer neighbourhood area location

Domestic Abuse VVI Offences

Enfield saw a 15.5% decrease in domestic abuse violence with injury offences. London also saw a 7.1% decrease.

As with domestic abuse, the number of domestic abuse violence with injury offences increased in May and June 2023. This increase was not reflected in the same months in 2024.

Number of Domestic abuse violence with injury offences by month



Domestic Abuse offences are monitored and discussed at Enfield's VAWG strategic board.

Ward	Oct-23	Nov-23	Dec-23	Jan-24	Feb-24	Mar-24	Apr-24	May-24	Jun-24	Jul-24	Aug-24	Sep-24	Total
Haselbury	6	0	4	6	6	11	6	7	5	4	3	7	65
Enfield Lock	0	7	4	6	5	5	3	2	11	5	5	10	63
Edmonton Green	10	4	8	5	2	2	5	3	7	2	5	7	60
Lower Edmonton	4	7	11	3	5	5	4	3	5	5	3	4	59
Ponders End	4	6	4	9	2	2	5	6	7	4	3	4	56
Brimsdown	6	3	5	3	2	2	10	3	4	6	3	2	49
Bullsmoor	6	5	5	1	4	3	4	6	2	7	1	2	46
Carterhatch	4	5	1	3	4	4	2	3	1	5	5	6	43
Jubilee	4	6	2	8	0	2	3	4	2	5	2	4	42
Upper Edmonton	4	4	4	4	1	4	3	5	1	5	5	2	42
Southbury	3	3	5	3	6	3	5	2	2	5	2	2	41
Bowes	2	2	3	2	3	3	4	4	3	8	3	2	39
Whitewebbs	6	6	2	2	3	3	0	3	0	4	3	2	34
Palmers Green	1	2	3	2	1	2	2	6	5	1	2	2	29
New Southgate	4	5	1	3	1	1	2	0	2	2	4	0	25
Town	1	2	2	4	1	0	1	0	1	1	6	5	24
Highfield	5	1	1	1	2	2	3	3	1	1	2	1	23
Southgate	4	0	6	1	3	2	0	3	1	0	2	0	22
Ridgeway	0	4	1	3	2	1	1	0	0	1	2	4	19
Winchmore Hill	4	0	2	2	3	2	1	2	1	0	1	0	18
Arnos Grove	3	1	1	1	0	1	3	1	2	2	0	1	16
Bush Hill Park	4	3	2	1	0	1	2	0	1	0	0	1	15
Cockfosters	0	1	3	4	2	1	1	1	1	0	0	1	15
Grange Park	1	0	2	0	1	0	2	1	3	0	0	0	10
Oakwood	0	0	0	0	0	1	3	2	1	0	1	0	8

The top 5 safer neighbourhood areas were: Haselbury, Enfield Lock, Edmonton Green, Lower Edmonton and Ponders End. In December 2023, Lower Edmonton reported 11 offences. May 2024 saw a high level of domestic abuse violence with injury offences in Haselbury (11), Jun 2024 Enfield Lock reported 11 offences and 10 offences in September respectively. 7 offences were reported in Haselbury and Edmonton Green in September 2024.

*not all domestic abuse violence with injury offences disclosed a safer neighbourhood area location

Enfield

- Last 12-months: 309 youth violence victims (previous 12-months: 265 youth violence victims)
- **Enfield rate: 4.8 per 1,000 youth pop.n.**

Haringey

- Last 12-months: 309 youth violence victims (previous 12-months: 372 youth violence victims)
- **Haringey rate: 6.6 per 1,000 youth pop.n.**

London change:

- London has recorded a 3% increase in youth violence victims in the past year.
- The average number of youth violence victims per borough was 210.
- **London rate: 4.2 per 1,000 youth pop.n.**

Borough	Oct22-Sep23	Oct23-Sep24	Change	Rate / 1,000 Youth Pop
Westminster	557	385	-31%	10.0
Lambeth	381	404	6%	7.1
Haringey	372	309	-17%	6.6
Croydon	399	449	13%	6.5
Hackney	214	283	32%	5.9
Southwark	342	334	-2%	5.8
Lewisham	183	261	43%	5.0
Enfield	265	309	17%	4.8
Greenwich	227	250	10%	4.8
Barking and Dagenham	327	222	-32%	4.8
Camden	218	208	-5%	4.7
Islington	226	173	-23%	4.4
Newham	329	309	-6%	4.2
Havering	120	181	51%	4.1
Waltham Forest	152	190	25%	4.0
Wandsworth	168	205	22%	3.9
Hammersmith and Fulham	108	132	22%	3.9
Kensington and Chelsea	64	90	41%	3.5
Tower Hamlets	220	237	8%	3.5
Ealing	183	234	28%	3.4
Hounslow	137	177	29%	3.4
Brent	205	218	6%	3.3
Barnet	211	219	4%	3.1
Bromley	153	159	4%	3.0
Sutton	111	100	-10%	2.8
Redbridge	180	149	-17%	2.5
Merton	109	86	-21%	2.5
Bexley	101	105	4%	2.4
Harrow	94	96	2%	2.1
Richmond upon Thames	36	65	81%	2.1
Hillingdon	106	117	10%	2.0
Kingston upon Thames	40	53	33%	1.7
London Total	6,538	6,709	3%	4.2

London Youth Violence Landscape

