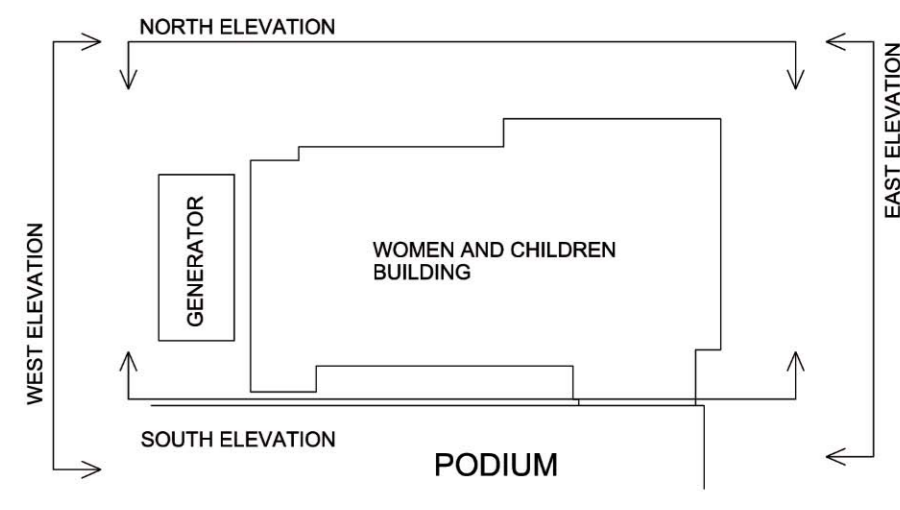
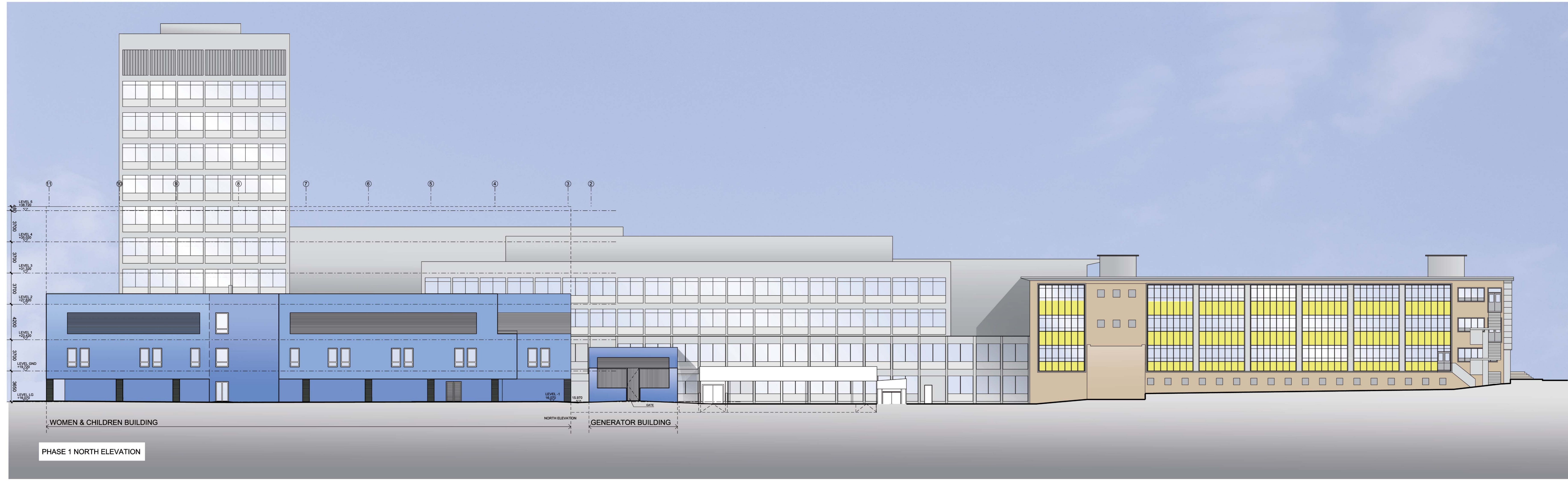


General Notes:
 1. This drawing is Copyright and is for use on site only.
 2. Do not scale from this drawing.
 3. This drawing to be read in conjunction with Architect's & service Engineers drawings. Any discrepancies to be brought to Bouygues UK Ltd before any construction starts.

Subsequent to the design review meeting held on _____ we hereby agree that these drawings - schedules - equipment lists represent our agreed room adjacencies, sizes, equipment content and equipment positions for the Variation 12 of the North Middlesex University Hospital PFI project.

Date	Name (Printed)	Position	Signature

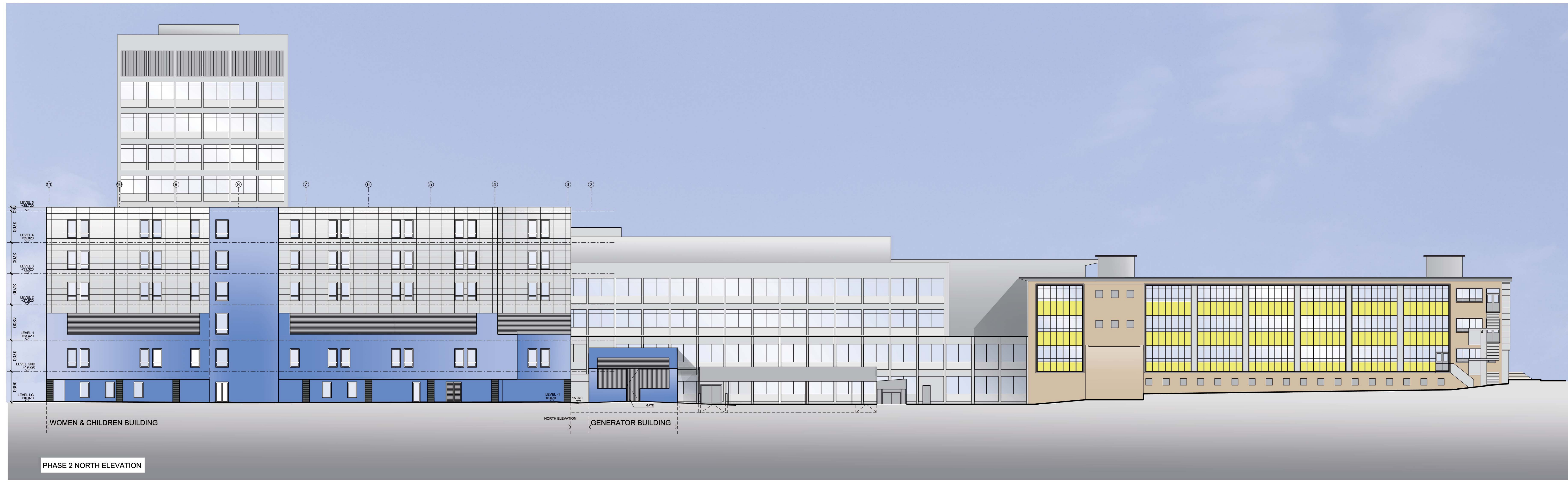
For and on behalf of North Middlesex University Hospital Trust



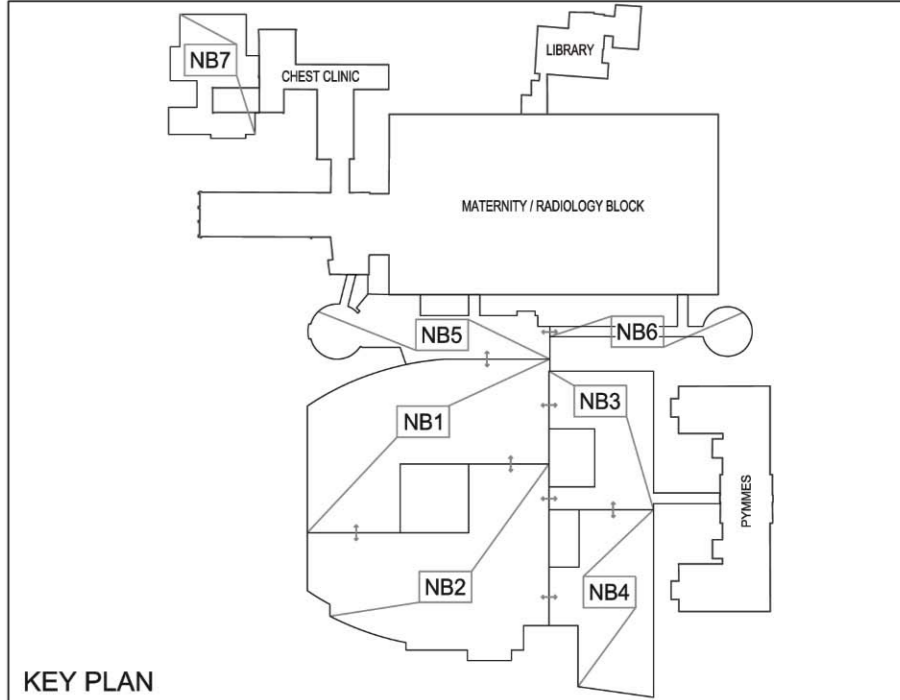
REV	DATE	REVISION HISTORY	Drm	Chk	App
E	06.07.10	PARAPET HEIGHT REVISED	AS	SS	
D	16.06.10	REVISED FOLLOWING COMMENTS	AS	SS	
C	8/6/10	Windows omitted from level -1 phase 1	BF	SS	
B	04.06.10	AMENDED AS SHOWN	IR	SS	
A	01.06.10	FIRST ISSUE	IR	SS	

ALL REVISIONS

NOTES:
 WINDOWS IN PHASE 2 MAY BE SUBJECT TO CHANGE THROUGH DESIGN DEVELOPMENT



REFERENCE DRAWING LIST

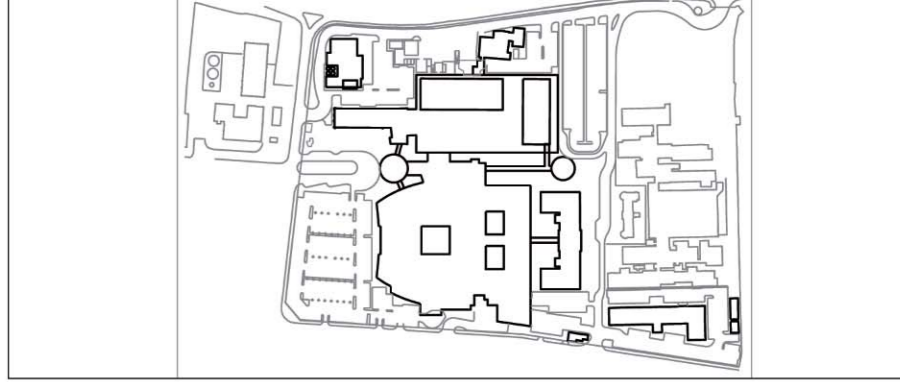


BOUYGUES

NORTH MIDDLESEX UNIVERSITY HOSPITAL

Head Office:
 Elizabeth House
 28 York Street
 London, E1 1AB
 Tel: 020 7461 0020
 Fax: 020 7461 9020

North Middlesex University Hospital **NHS**



NIGHTINGALE architects
 www.nightingaleassociates.com

DRAWING TITLE
 North Middlesex University Hospital Trust Variation V.12
 General Site Elevations-North
 Delivery Unit Women's&Children's B.

NAME	SIGNATURE	DATE
Designed		
Designed	IR	19/05/10
Drawn By	SS	19/05/10
Checked		

SCALE - FORMAT FILE NAME
 1:200@ A0+ NM3-NA-SKE-810033
 PROPOSED STATUS
PRELIMINARY

AREA	LEVEL	TRADE	PHASE	ISSUER	TYPE	SEQUENCE No.	REV
N	W	C	S	L	A	3	N M 3 N A S K E 8 1 0 0 3 3 E