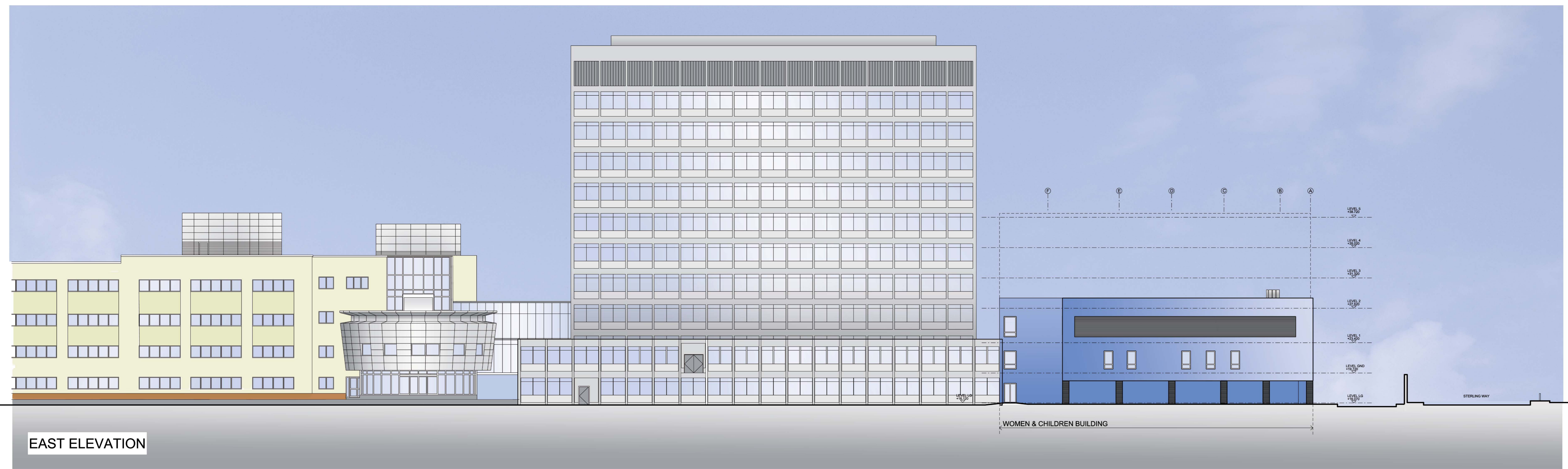


General Notes:  
 1. This drawing is Copyright and is for use on site only.  
 2. Do not scale from this drawing.  
 3. This drawing to be read in conjunction with Architect's & service Engineers drawings. Any discrepancies to be brought to Bouygues UK Ltd before any construction starts.

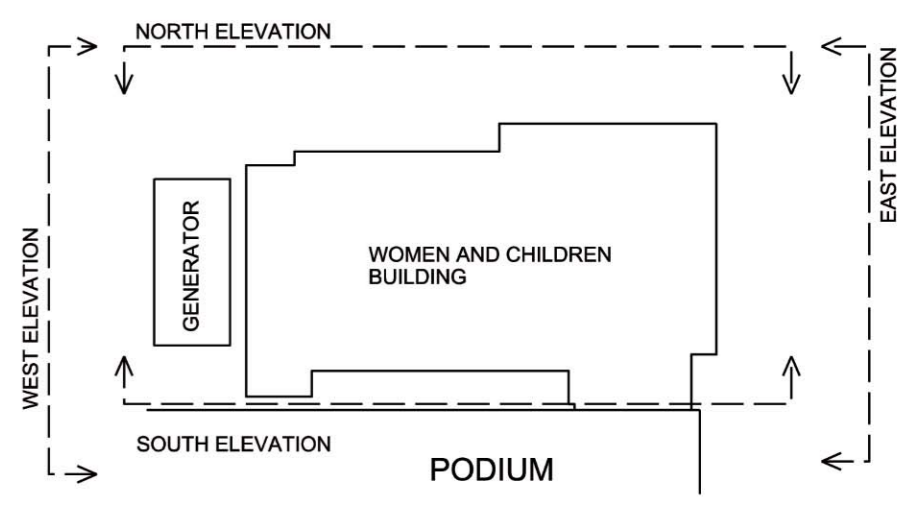
Subsequent to the design review meeting held on \_\_\_\_\_ we hereby agree that these drawings - schedules - equipment tabs represent our agreed room adjacencies, sizes, equipment content and equipment positions for the Variation 12 of the North Middlesex University Hospital PFI project.

Date	Name (Printed)	Position	Signature

For and on behalf of North Middlesex University Hospital Trust



EAST ELEVATION

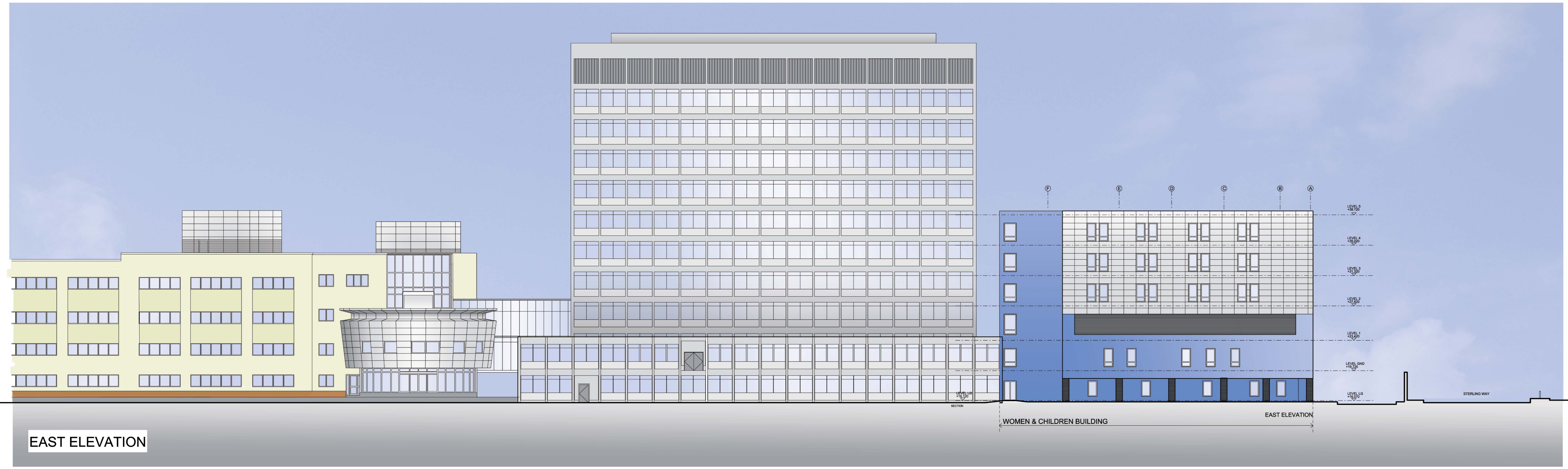


LOCATION PLAN

REV	DATE	REVISION HISTORY	Dm	Chk	App
E	06.07.10	PARAPET HEIGHT REVISED	AS	SS	
D	16.06.10	REVISED FOLLOWING COMMENTS	AS	SS	
C	08.06.10	level -1, phase 1, windows omitted	gf	SS	
B	04.06.10	AMENDED AS SHOWN	IR	SS	
A	01.06.10	FIRST ISSUE	AS	SS	

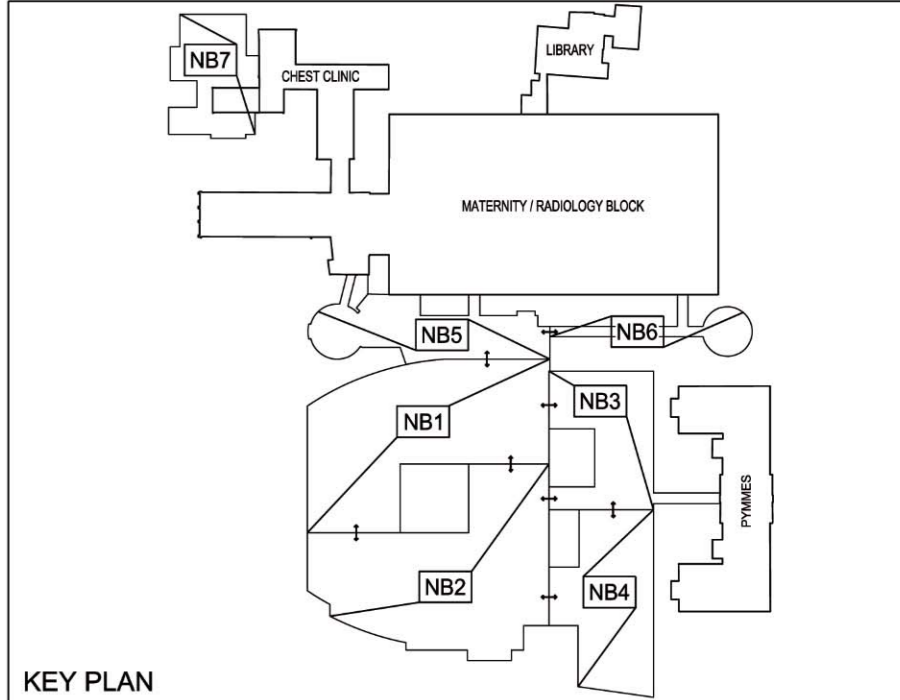
**ALL REVISIONS**

NOTES:  
 WINDOWS IN PHASE 2 MAY BE SUBJECT TO CHANGE THROUGH DESIGN DEVELOPMENT



EAST ELEVATION

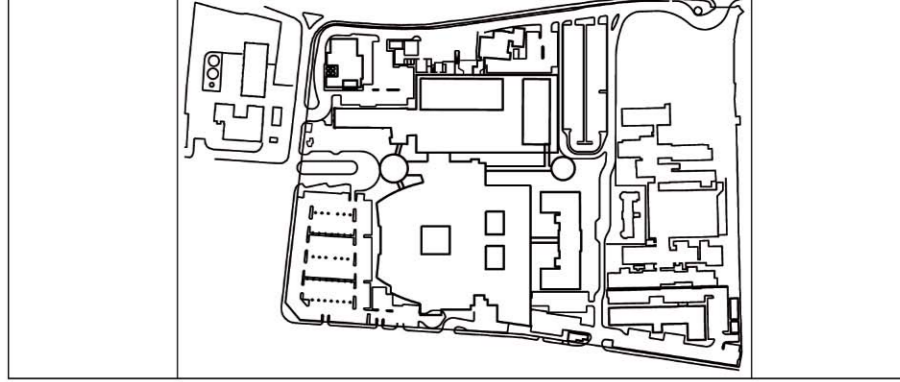
REFERENCE DRAWING LIST



KEY PLAN

**BOUYGUES**  
 Head Office:  
 Elizabeth House  
 28 York Street  
 London EC3A 3DE  
 Tel: 020 7461 0025  
 Fax: 020 7461 0020

**NORTH MIDDLESEX UNIVERSITY HOSPITAL**  
 North Middlesex University Hospital NHS Trust



**NIGHTINGALE** architects  
 associates ■■■■  
 www.nightingaleassociates.com

DRAWING TITLE  
 North Middlesex University Hospital Trust Variation V.12  
 General Site Elevations-East  
 Delivery Unit Women's&Children's B.

NAME	SIGNATURE	DATE
Designed	AS	19/05/10
Drawn By	SS	19/05/10
Checked		

SCALE + FORMAT FILE NAME  
 1:200@ A0+ NM3-NA-SKE-810031  
 PROPOSED STATUS  
**PRELIMINARY**

AREA	LEVEL	TRADE	PHASE	ISSUER	TYPE	SEQUENCE No.	REV
N	W	C	S	L	A	3	N M 3 N A S K E 8 1 0 0 3 1 E