

Metropolitan Police Service Alcohol Related Crime in YE Borough.

The information is based on alcohol related reported crime, received by the Metropolitan Police in the area of Enfield borough (YE). The time frame of activity is from the 7th September 2012 to 7th September 2014.

This equated to 11793 offences found by text mining crime reports. Due to fact that there is no real measure to obtain just alcohol related offences. This means that all downloaded offences are subject to accurate officer inputting and the relevance of the key word in the dets. With the vast number of offences every crime could not be cleaned to make sure they all fitted the requested modal of offending.

Key words used

- %Intoxic%
- %Alcohol%
- %Drunk%
- %Beer%
- %Larger%
- %Cider%

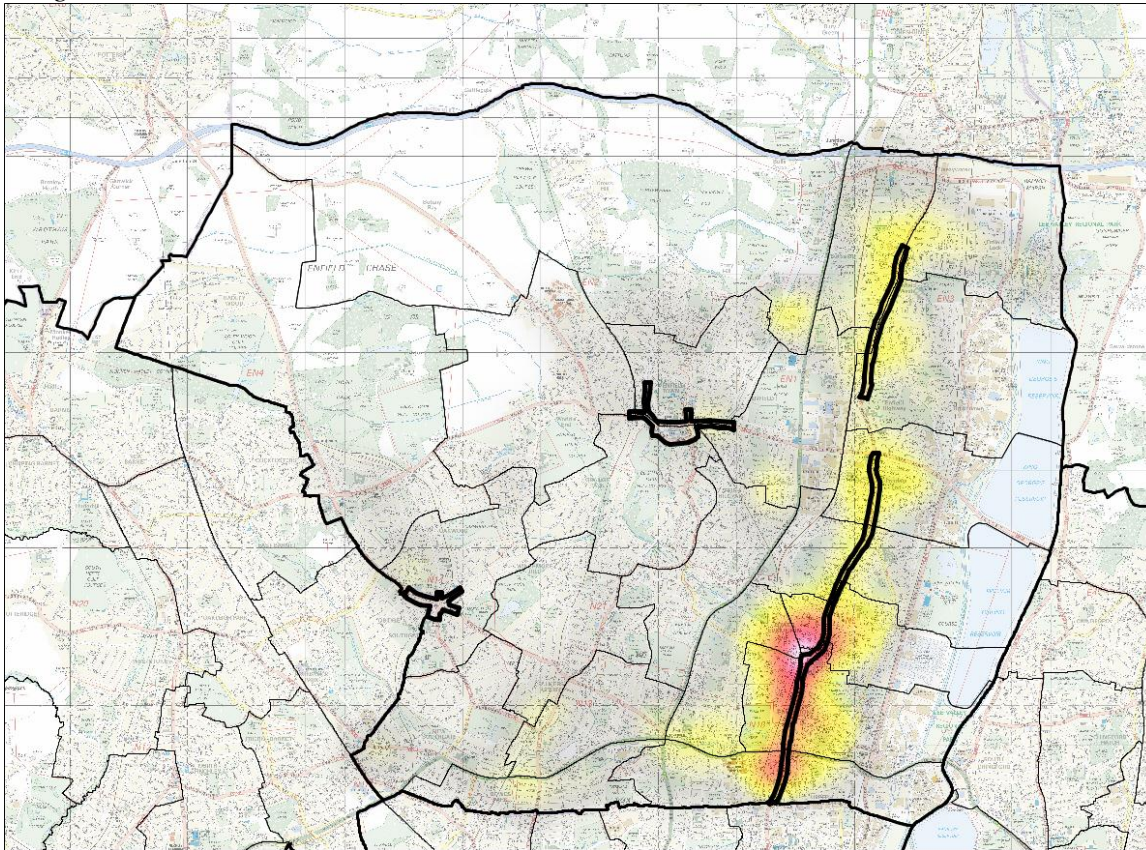
The Metropolitan Police have three feature codes that could have been used to gain appropriate information for the product.

1. GA - Alcohol consumed at scene of crime such as burglary where the suspect has consumed alcohol whilst committing the offence.
2. MV - Victim has been drinking prior to the offence.
3. MF - Suspect / Accused has been drinking prior to the offence.

Unfortunately from the total downloaded offences, ONLY 13.03 % had been labelled with a feature code on the dets. This is attributed to the sum of all the feature codes combined together. This means that where crimes have more then one feature code, the total credited figure could be lower then what has been stated. Therefore it was decided not to download crimes just on feature codes and rely on text mining to gauge a more accurate representation of offending on the borough of YE.

All the offences were mapped onto the borough, were I had outlined the four cumulative impact areas of Edmonton, Enfield Highway, Enfield Town and Southgate. I then selected all the offences that fell into the impact areas for further analysis.

Image 1



This borough picture relates to all offences in the form of a hotspot map. This is where the highest concentration of offending receives a heat source footprint and the more offences coupled together, the more the heat source will show up. On top of the Hotspot map I have placed the four cumulative impact areas. This allows us to visually interpret which area is being affected and the geographic impact of offending around the areas concerned.

The Edmonton cumulative impact area is the most affected area, followed by Enfield Highway. If a figure based look at the offences within the heat zone were to be looked at. It would equate to 3515 offences in the Edmonton area. However there would be trouble trying to identify those offences generally linked to the cumulative area and ones just related to alcohol consumption.

Therefore it was decided to only look at those offences that fall within the impact zones. These offences could be more or less linked to alcohol related crimes affected by internal factors within the zones (like clubs, off licences or pubs).

Table 1

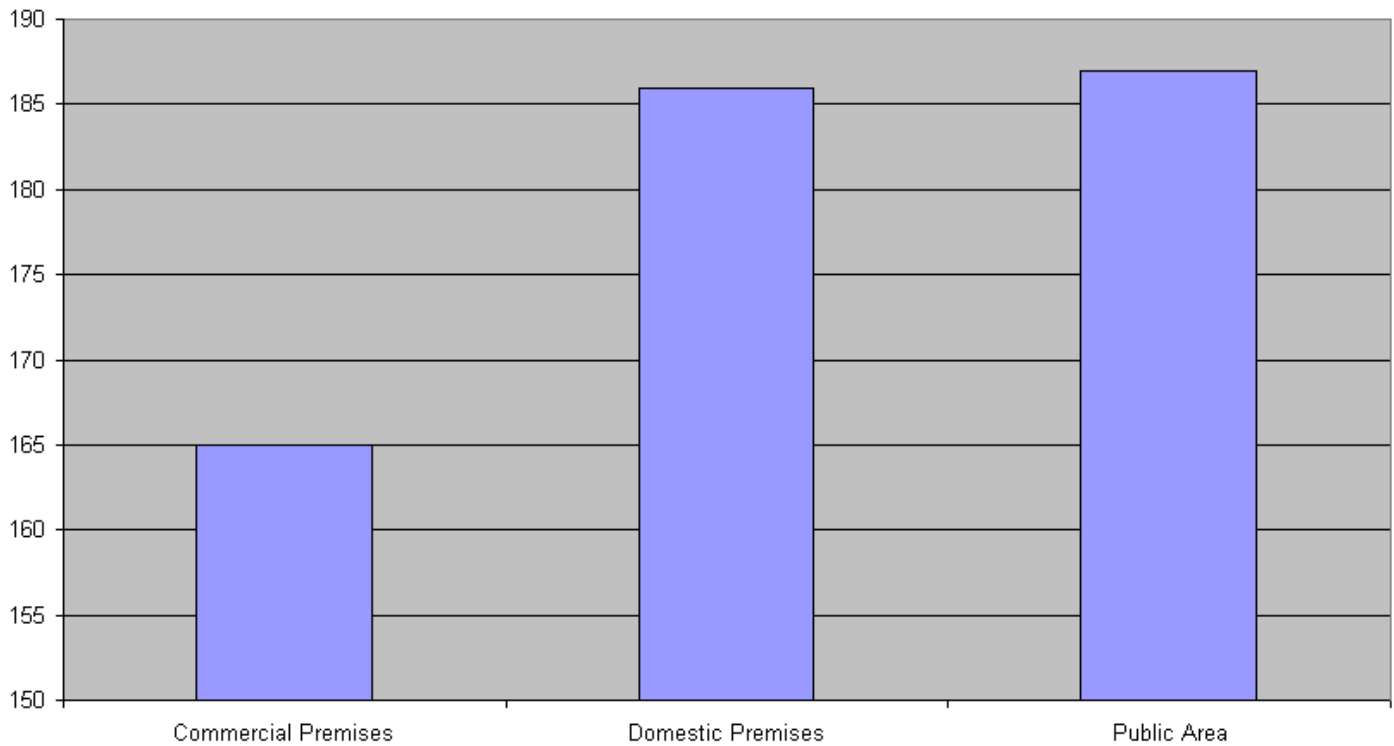
Total Alcohol Related Crime Between September 2012 to September 2014									
Area	11am - 3pm	11pm - 3am	Mon	Tue	Wed	Thu	Fri	Sat	Sun
Edmonton	98	107	76	73	77	57	75	97	83
Enfield Highway	14	18	15	8	7	10	10	15	12
Enfield Town	43	43	10	18	29	19	26	32	35
Southgate	16	13	6	10	4	12	12	20	10

The above table represents the four areas and the impact of alcohol related offending during peak trading hours and days of the week. To put this into more light I have created the below table, which represents what percentage of offending the above numbers represent against total offending in the areas.

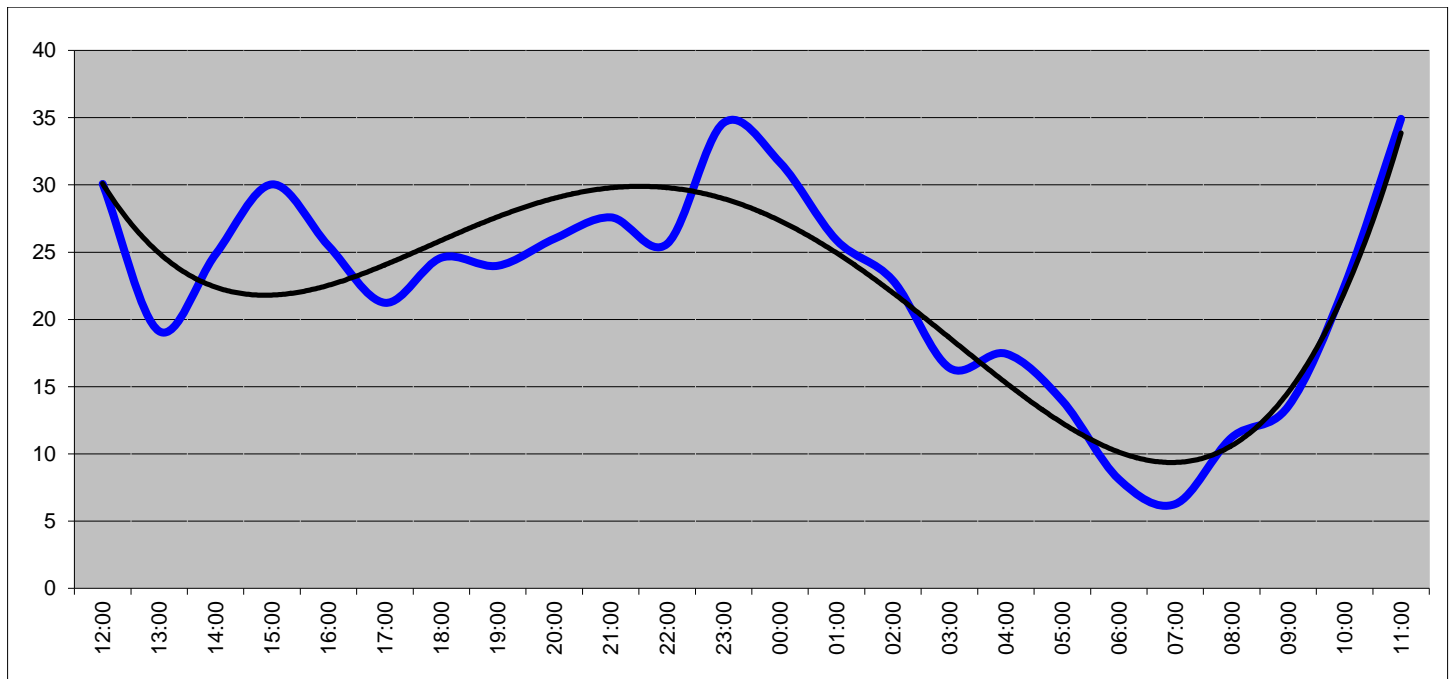
Table 2

% of Total Alcohol Related Crime Between September 2012 to September 2014									
Area	11am - 3pm	11pm - 3am	Mon	Tue	Wed	Thu	Fri	Sat	Sun
Edmonton	18.22	19.89	14.13	13.57	14.31	10.59	13.94	18.03	15.43
Enfield Highway	18.18	23.38	19.48	10.39	9.09	12.99	12.99	19.48	15.58
Enfield Town	25.44	25.44	5.92	10.65	17.16	11.24	15.38	18.93	20.71
Southgate	21.62	17.57	8.11	13.51	5.41	16.22	16.22	27.03	13.51

EDMONTON CUMULATIVE IMPACT AREA

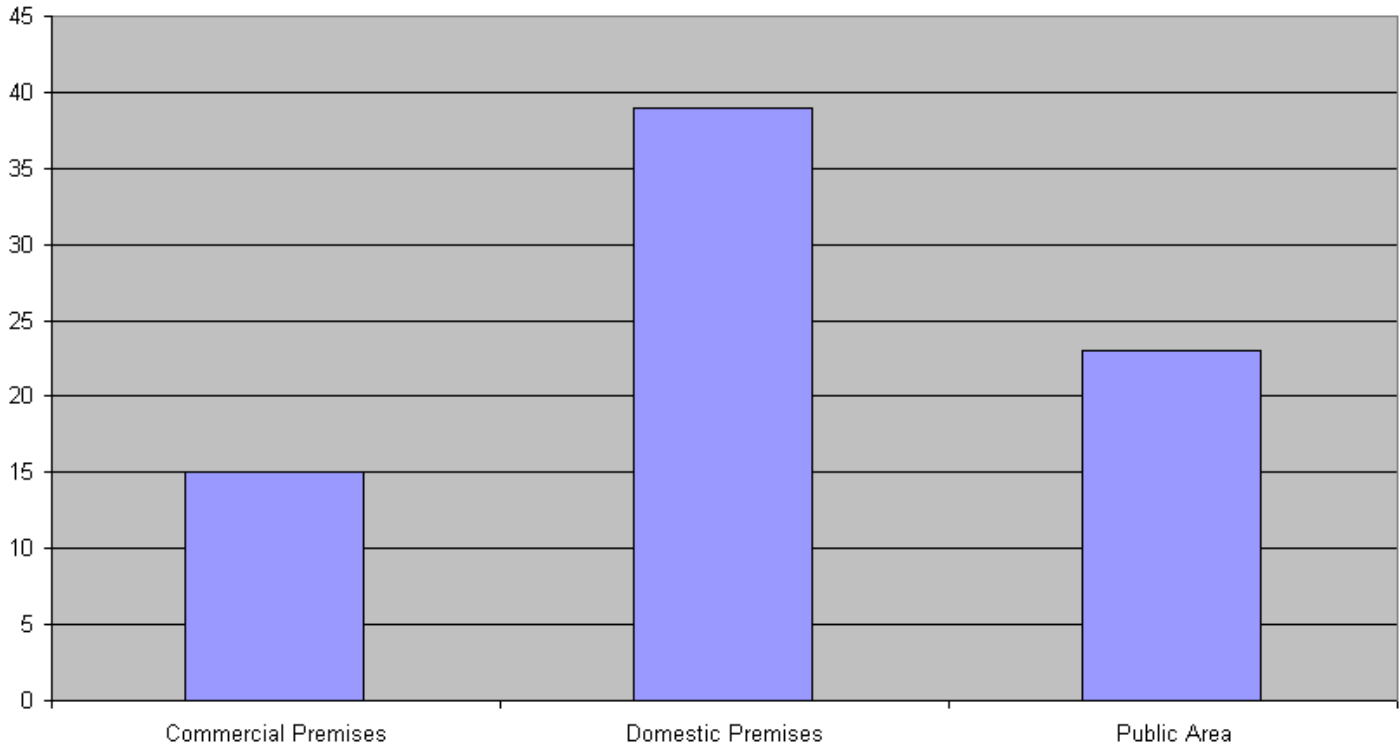


There were a total of 538 Alcohol related complaints in the Edmonton Stress Area in this period of time. 165 were offences at commercial premises, 186 were at domestic premises and 187 were at public areas.

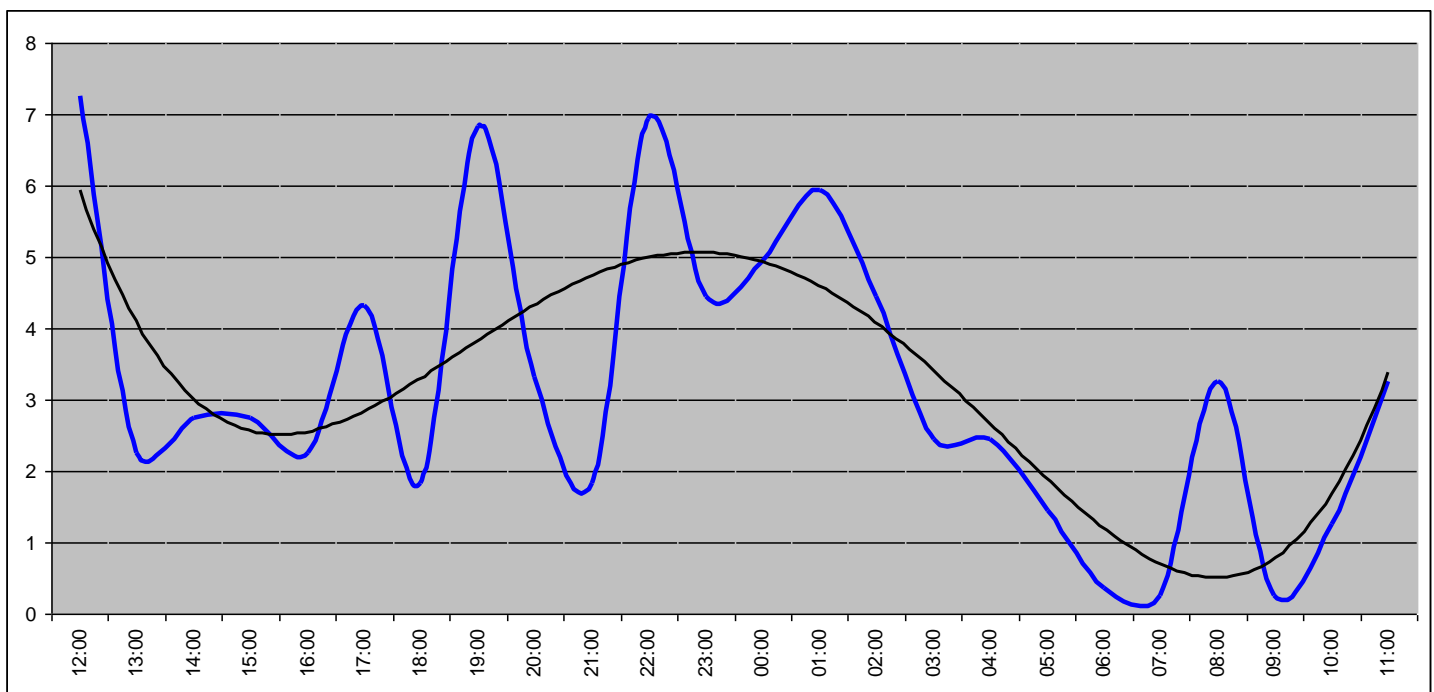


The above line graph shows the time of ALL alcohol related offences received against every type of premises. The graph shows a surge in crime reports within the hour of 22:00 gradually decreasing until the hour 01:00, where there is a slight increase but still decreasing.

ENFIELD HIGHWAY CUMULATIVE IMPACT AREA

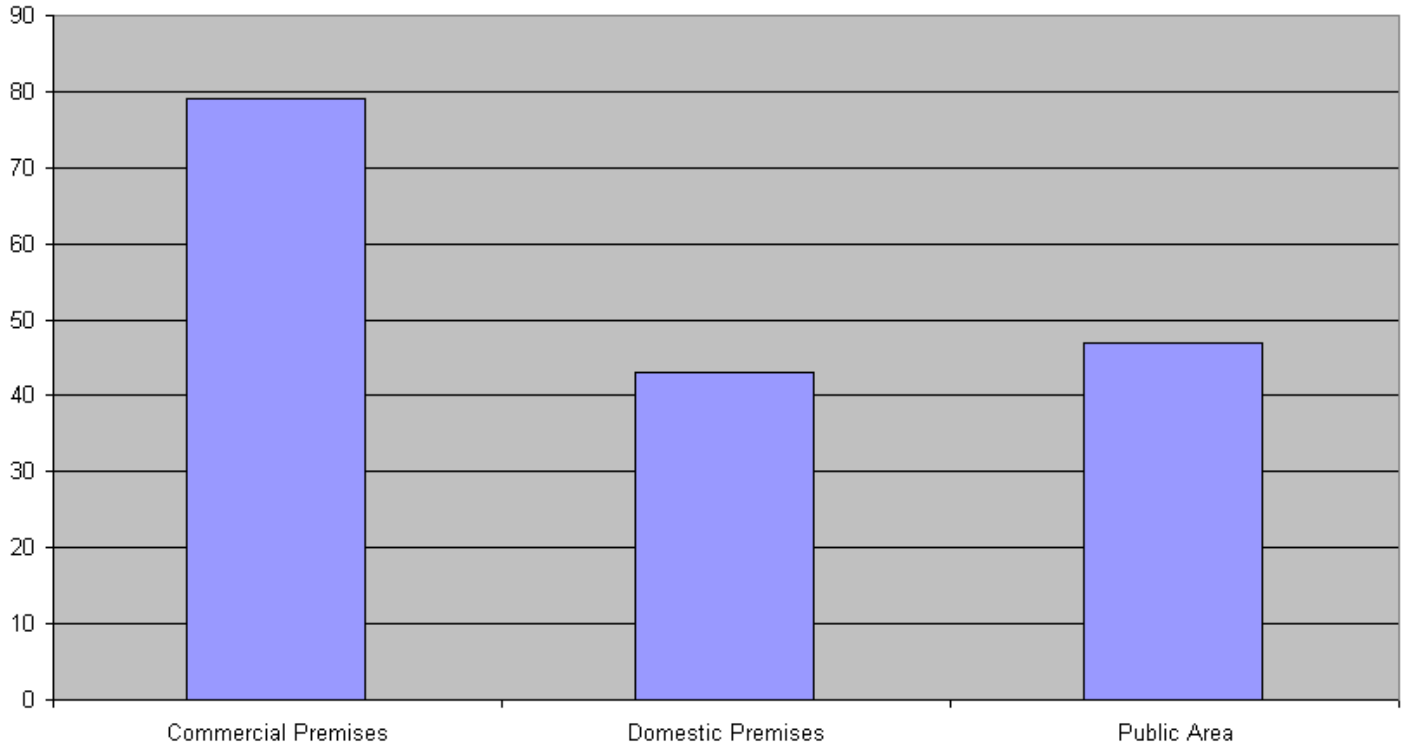


There were a total of 77 Alcohol related complaints in the Enfield Highway Stress Area in this period of time. 15 were offences at commercial premises, 39 were at domestic premises and 23 were at public areas.

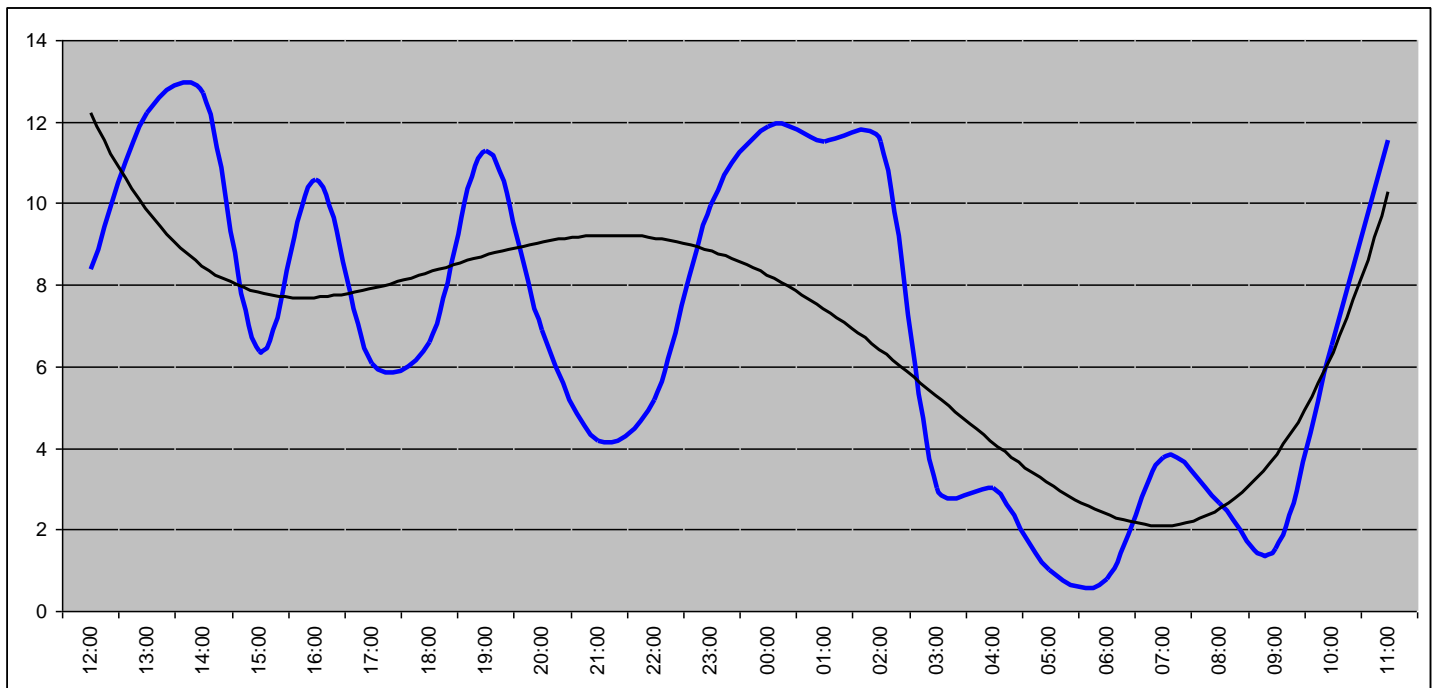


The above line graph shows the time of ALL alcohol related offences received against every type of premises. There are two main time frames of activity with a peak at 22:00 hours and slightly before at 19:00 hours. The main time frame starts from 21:30 hours and drops at 22:30, before picking up again and fishing at 02:30 hours. The other time frame starts at 18:30 and finishes at 20:00.

ENFIELD TOWN CUMULATIVE IMPACT AREA

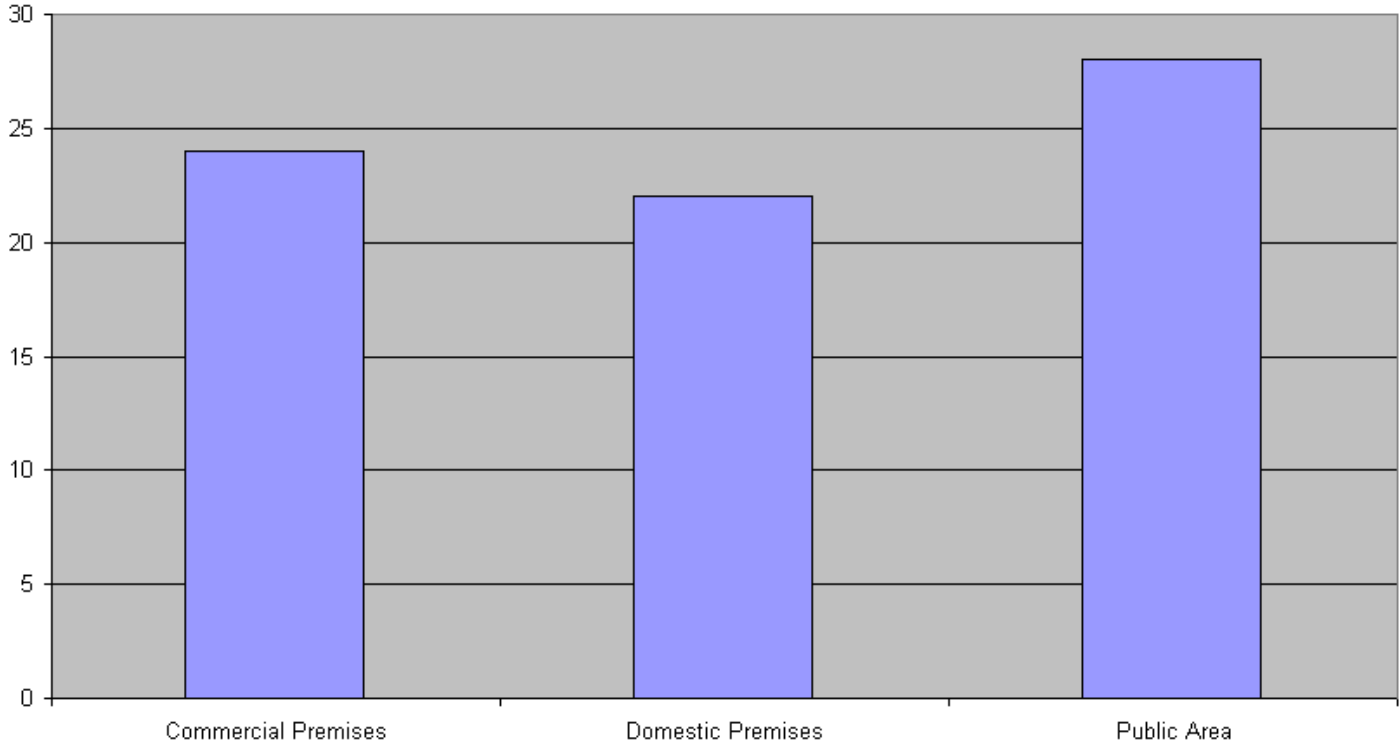


There were a total of 169 Alcohol related complaints in the Enfield Town Stress Area in this period of time. 79 were offences at commercial premises, 43 were at domestic premises and 47 were at public areas.

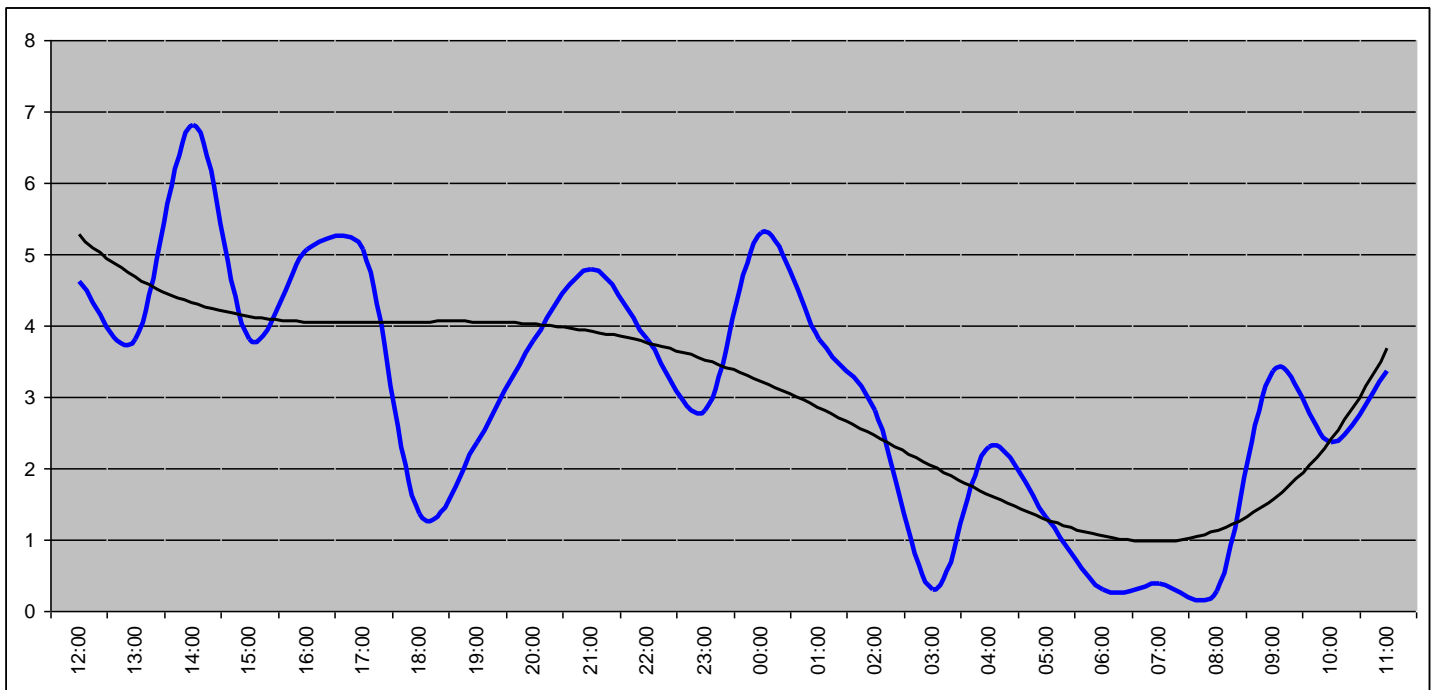


The above line graph shows the time of ALL alcohol related offences received against every type of premises in the Enfield Town Stress Area. There is not a particular time where alcohol crime is at a peak, as there are multiple peaks throughout the 24 hours. The hours of 13:30 and 00:00 hours have the highest amount of crime reports.

SOUTHGATE CUMULATIVE IMPACT AREA.



There were a total of 74 Alcohol related reports in the Southgate Stress Area in this period of time. 24 were offences at commercial premises, 22 were at domestic premises and 28 were at public areas.



The above line graph shows the time of ALL alcohol related reports received against every type of premises in the Southgate Stress Area. The hours with the most alcohol related reports were at 14:00 and 00:00 hours.