

**MUNICIPAL YEAR 2020/21 REPORT NO.**

**MEETING TITLE AND DATE:**

**Children’s, Young People & Education Scrutiny Panel**  
Date: 17/09/2020

**REPORT OF:**

Director of Children and Family Services and Director of Education

**Item:**

**Agenda – Part:**

**Subject:** Report to Scrutiny Panel on work of Children’s, Young People and Education Scrutiny Panel and key priorities for 2020-21  
**Wards: All**

**Cabinet Member consulted:** Cllr R. Jewell

Contact officer and telephone number:

Anne Stoker, Director of Children and Families Services, 020 8379 4075  
Email: [anne.stoker@enfield.gov.uk](mailto:anne.stoker@enfield.gov.uk)

Peter Nathan, Director of Education, 020 8379 5840  
Email: [peter.nathan@enfield.gov.uk](mailto:peter.nathan@enfield.gov.uk)

**1. EXECUTIVE SUMMARY**

1.1 The People Department provides a range of statutory services in Children & Families Services and Education Services. These duties relate to looked after children, services to disabled children, children in need of help and/or protection, youth offending, safeguarding, school improvement, special needs, early years, school admissions, attendance and exclusion, governance, teacher training and the provision of school places.

1.2 This report sets out the service areas and identifies the key work priorities during 2020/21, consistent with the statutory duties of the Council, government guidance and best practice.

**2. RECOMMENDATIONS**

2.1 To note the contents of this report when considering the areas of focus for the Children’s, Young People and Education Scrutiny Panel during the municipal year 2020/21.

### **3. REPORT**

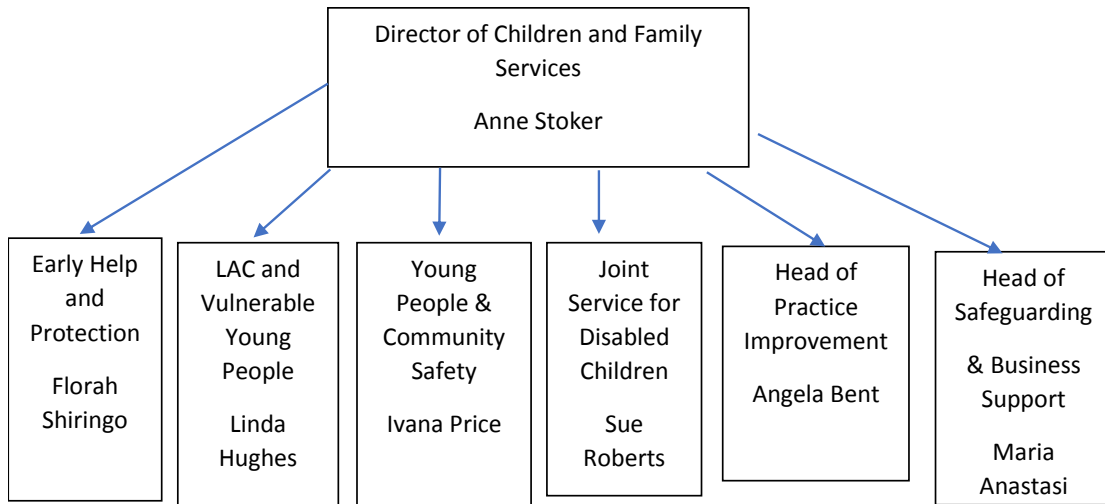
#### **3.1 BACKGROUND – CHILDREN & FAMILY SERVICES**

- The Children and Families division of the People department provides a wide range of services to children, young people and families. Services are provided to over 2,000 children at any given time and some of these services operate on a 24/7 basis, e.g. children at risk of suffering harm.
- Staff are based in buildings around the borough including Claverings, Charles Babbage House, Triangle House, Cheviots, Wheatsheaf Hall, Edmonton Contact Centre and Civic Centre.

The types of support offered include:

- Early help - identifying and providing effective support to children and young people who are at risk of poor outcomes. For early help to be effective and sustainable we give people the help they need as early as possible, and support individuals, families and communities to develop coping strategies and reduce the escalation of need.
- Statutory interventions including Youth Offending, Prevent (radicalisation) and Hate Crime, children in need of help and protection and those that become looked after as they cannot be safely cared for by their families.
- Statutory support to care leavers up to the age of 25 e.g. housing, emotional well-being, support around educational outcomes and employment opportunities.
- Statutory support to children with disabilities, delivering the local SEND (special educational needs and disabilities) offer by providing a wide range of services, help and support to children and young people and their families, to prevent family breakdown.

## Children and Family Services Structure



### **Early Help & Protection**

This service is responsible for Parent Support Service, Change & Challenge (Troubled Families), Early Help Triage, Out of Hours Emergency Duty Team, MASH (Multi-agency Safeguarding Hub), Referral & Assessment Teams, Domestic Abuse Service and Hub, Child Protection & Family Support Teams, Edge of Care Team, CiN (child in need) team and Frontline (social work student) team.

### **Looked After Children & Vulnerable Young People**

This service is responsible for Looked After Children teams, Leaving Care Teams, Fostering teams, Special Guardianship Team, the Virtual School for Looked After Children, the Child Sexual Exploitation Team, Access to Resources Integrated Service, the Edmonton Contact Centre and Parent Capacity Assessment Service.

### **Young People & Community Safety**

This service is responsible for the Youth Offending Service (YOS), Youth Development Service (YDS) and the Community Safety Unit (CSU).

The YOS works with young people aged 8 to 16 to prevent them offending and work with young offenders aged 10 to 19 on statutory orders to manage the risk they pose to the community and prevent them re-offending.

The YDS deliver the youth strategy and summer university, coordinating positive activities from the youth centres across the Borough. They have trained youth mentors and targeted youth outreach service. It delivers the Inspiring Young Enfield project funded by the young Londoners fund.

The CSU is responsible for anti-social behaviour, public safety monitoring (CCTV), Prevent & Hate Crime and the domestic violence against women and girls strategy.

### **Joint Service for Disabled Children**

A multi-agency service that commissions and provides services for disabled children and their families, mainly based at the Cheviots Centre. Responsible for social work teams, early intervention support service, short breaks service, transition and supported internships.

### **Practice Improvement**

This service is responsible for learning & professional development, Social Work Students, Social Work Apprenticeships, NAAS (national assessment accreditation system), newly qualified social work support and training, Practice Leads, Self-evaluation and continuous improvement programme, audit and moderation quality assurance programme, inspection coordination and sector led improvement.

### **Safeguarding & Business Support**

This service responsible for the statutory independent chairing of all child protection conferences and Looked After Children reviews and the Local Authority Designated Officer (LADO) functions. The LADO deals with child abuse allegations against professionals and volunteers. The service is also responsible for the Family Group Conference Co-ordinator Service and operational support.

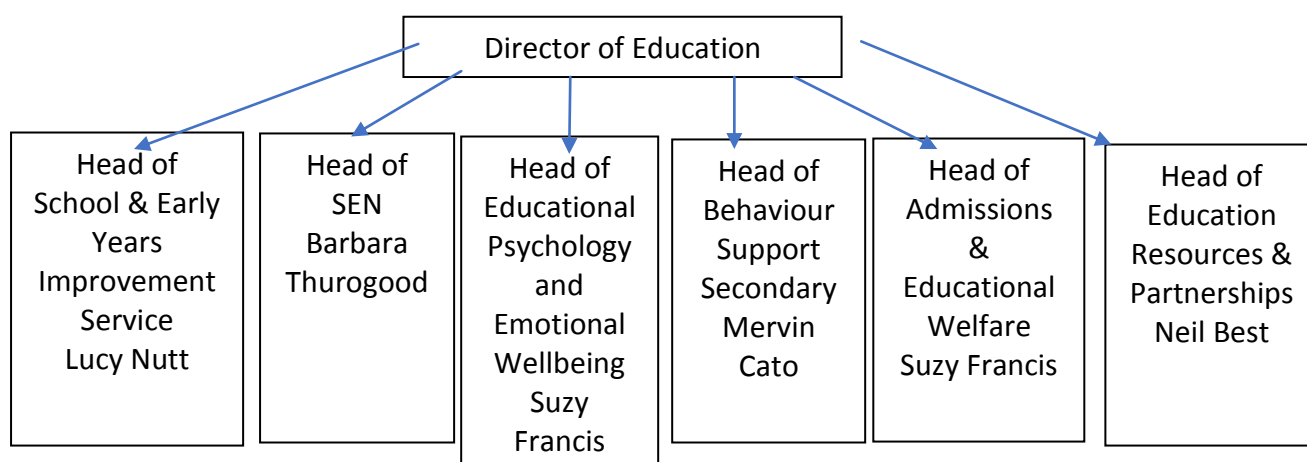
## **3.2 BACKGROUND - EDUCATION SERVICE**

- The Education Service includes School Improvement Services, Early Years, Educational Psychology, School Admissions, Behaviour Support Services, Educational Resources and Place Planning, school governance, and services for children with disabilities and special educational needs.
- The Education Service provides a range of statutory work for the local authority in relation to place planning, admissions, children and young people with special educational needs.
- The Education Service discharges the local authority's statutory duties in any school that is graded by Ofsted as inadequate or requires improvement.
- There are 96 schools in the borough; a combination of local authority maintained schools, foundation and voluntary aided schools, stand-alone academies, small MATS and schools belonging to larger regional/national MAT chains. There are also some federations and charitable trusts set up to enable groups of schools to work together.
- Pupil progress overall in both primary and secondary sectors is above average but there is considerable variation between schools. This is

also the case with pupil attainment which is generally in line or above the national average (except at KS1) but with wide variations. Academic attainment when measured against other London local authorities tends to be in the lower quartile. Underlying this data is relatively low achievement for disadvantaged children and some minority ethnic groups.

- The service focuses on identifying and directing resources to support schools with particular need, as well as offering support and challenge to all the maintained schools.

Education Services Structure



### **School Admissions**

Manages the allocation of school places including mid-term admissions

### **School Attendance & Exclusions**

Manages the statutory process regarding school attendance also trades with schools to support schools with managing attendance. Manages the process for children excluded from schools.

### **Secondary Behaviour Support Service**

Supports schools managing pupil behaviour, works with the Fair Access Protocol & provides support to individual pupils. Also manages the NEXUS programme to reduce exclusions from school and to reduce youth violence.

### **Primary Behaviour Support Service**

Supports primary schools managing behaviour. Works with individual pupils and provides training to school staff.

### **School and Early Years Improvement Service**

Works with schools and early years providers to maintain and improve the quality of education. Monitors school performance and intervenes/supports as needed. Provides a wide range of training to support schools (traded) and some other

services such as to support PE and swimming. Also includes school governor services, careers service and Post 16 services.

### **Educational Resources & Planning**

Manages school place planning, school expansion, school maintenance & building projects and aspects of school finance/budgets including school's forum.

### **Special Needs**

Provides statutory services to meet the requirements of the 2014 Education Act. This includes the process of assessment leading to an EHCP and associated legal requirements. There are currently over 3000 children and young people with EHCPs.

### **Education Psychology Service**

Provides statutory services under the 2014 Education Act with regard to special educational needs. The service leads on mental health support for the People's Department working with health and social care.

## **3.3 KEY PRIORITIES FOR 2020/21**

- Covid-19 recovery – pupil physical and emotional well-being.
- Improve school attainment and reduce exclusion from school.
- School Attendance – post lockdown
- School Ofsted Judgements
- EHCP pathway review
- Increase local education provision for children with SEND
- Recovery of social work services post lockdown
- Effectiveness of Early Help & Prevention services
- Improving Outcomes for LAC & Care Leavers
- Joint Service for Disabled Children – service developments
- Self-Evaluation of social care services
- Protect the most vulnerable residents in the borough from suffering abuse or neglect
- Scrutiny Reports – LADO/ Fostering/ Adoption/Annual Safeguarding Partnership Report
- Transition of Children's Services to Dugdale Centre
- Enhance the involvement of Young people within our decision-making structure where possible ie shadow cabinets, mystery shopper type roles.
- Reviewing our Youth Offending Service ie feedback from young people and parents etc
- Improving the role of our volunteers within the YOS and input into decision making where possible.
- Youth Services

#### **4. REASONS FOR RECOMMENDATIONS**

The Children, Young People and Education Social Services Scrutiny Panel on 17th September 2020 will be considering it's work priorities for the municipal year 20/21. The contents of this report are designed to support this process.

#### **Background Papers**

Children and Young People Plan (currently being re-written)