

Private Homes Retrofit in Enfield

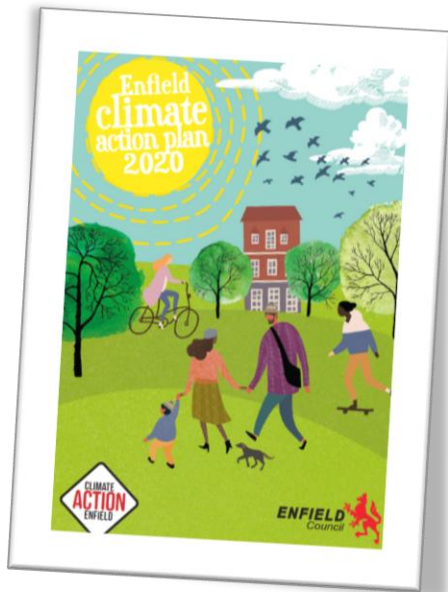
www.enfield.gov.uk

Striving for excellence



Enfield's Climate Action Plan


We will work with our staff, suppliers, residents, businesses, schools, statutory partners and Government to become a **carbon neutral organisation by 2030** and create a **carbon neutral borough by 2040**



Plan provides overarching framework with actions under key themes including buildings

Retrofit in the Climate Action Plan

Number of actions supporting retrofit such as:

- Increase private rented property SAP / EPC
 - Targeting fuel-poor households
 - Low carbon Council housing retrofit plan with target of SAP 86 / EPC B
 - Low carbon retrofit of Enfield Schools
 - Improving energy efficiency of Council offices
 - Lobbying Government for funding.
- 

What is retrofit?

Changes to a building which improve energy efficiency:

Fabric – doors, windows, walls, roofs.

Heating – source (including heat networks) and controls.

Energy generation – solar panels, heat pumps.

Can involve one or many (“deep retrofit”).

Each improvement has a different level of impact versus cost.

Green Homes Grant – Voucher Scheme

- £2 billion government scheme to launch end of September 2020
- Home improvement voucher direct to customer
 - Up to £5000 voucher with additional contribution required from owner occupiers / landlords
 - Up to £10000 voucher for low income owner occupiers with no contribution required (landlord's not eligible)
- Primary Measures (at least one required)
 - Building fabric insulation (e.g Loft, Wall, Floor)
 - Low carbon heat (e.g. Heat pump and Solar Thermal)
- Secondary Measures
 - Glazing & door replacement
 - Draught proofing
 - Hot water insulation and heating controls
- Improvements must be completed by 31st March 2021

Green Homes Grant – Barriers

There are some obvious barriers:

- Eligibility criteria
- Measures are not suitable for all properties
- Availability of contractors
- People need to know about the scheme
- Relatively short timescales
- Need to provide top up money (one third of costs).

Green Homes Grant – Getting Higher Uptake

- Nationwide marketing and communications campaign
- Local civic groups and organisations have a role to play in signposting people to information:
<https://www.gov.uk/guidance/apply-for-the-green-homes-grant-scheme>
- Local contractors are being encouraged to sign up and the Council is working with a cooperative which supports this.
- Those on low incomes can apply for a full Green Homes Grant and there is the Enfield Fuel Poverty Scheme.

Enfield Fuel Poverty Scheme

- Existing scheme for vulnerable residents which is delivered by HEET (Home Energy Efficiency Training Ltd - <https://www.theheetproject.org.uk/>) in partnership with Waltham Forest:
 - Home visits to referred residents
 - Outreach events
- Home visits include energy advice and minor home improvement
- Referrals for larger retrofit works (e.g insulation and heating systems replacements)
- HEET currently supporting applications to Green Home Grant voucher scheme to previously referred low income households
- Looking to use Council knowledge to reach more fuel-poor vulnerable households and increase referrals and uptake in Enfield.

Questions?

www.enfield.gov.uk

Striving for excellence

