



General Notes
DO NOT SCALE. All dimensions must be checked on site, errors are to be reported.

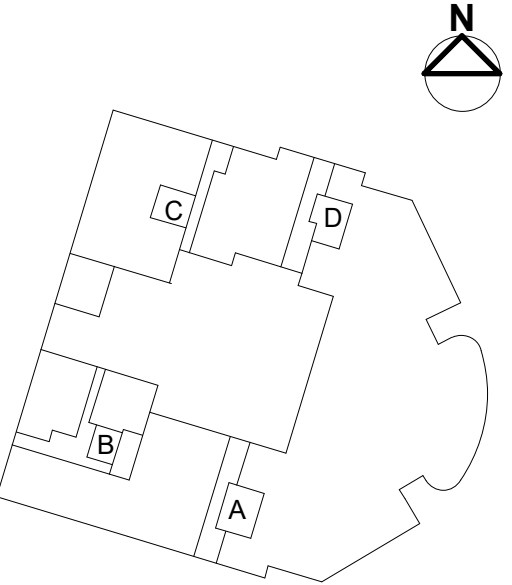
All illustrated materials are subject to copyright. Unless otherwise agreed in writing, all rights to use this document are subject to payment of all Architect's charges. This document may only be used for the express purpose and project for which it has been created and delivered, as notified in writing by the Architect. This document may not be otherwise used or copied. Any unauthorised use of this document is at the user's sole risk and without limiting the Architect's rights the user releases and indemnifies the Architect from and against all loss to arising.

Contractors must ensure that cross referenced drawings and specifications noted on these drawings are checked on a regular basis to ensure that the latest revisions are used.

Drawing Notes

Add drawing notes here

Key



Legend

Application Boundary
Plot Parameter Boundary

Interface between proposed development and SIW implemented by SIW
Interface between proposed development and SIW coordinated with SIW

Ancillary
Commercial
Communal
Service
Substation & Gas Governor
Undercroft

* Cycle parking is provided for each building as follows:

5% Sheffield stands for larger and adapted cycles
25% Sheffield style parking stands
70% Double staking cycle parking units

* Pavement and cycle way provided as part of SIW

Issue Record	By	Chk	Date
PL1 For planning	LA	VM	30.05.2022
PL2 For planning	LA	VM	09.09.2022

Title
PROPOSED GROUND FLOOR PLAN

Project
Meridian Water Phase Two - Plot 202-01

Scale
1: 100 @ A0

Status
PL (For planning)

Drawing Number	Revision
MW2202-PTA-ZZ-00-DR-A-91000	PL2

Patel Taylor
48 Rawstone Street
London EC1V 7ND
T: +44(0)20 7278 2323
<http://www.patel-taylor.co.uk/>

Patel Taylor