

London Borough of Enfield

Health and Adult Social Care Scrutiny Panel, Wednesday, 8th March 2023

Subject: Draft Independent Living Strategy (2023-2027)

Cabinet Member: Cllr Alev Cazimoglu, Cabinet Member for Health and Social Care

Executive Director: Tony Theodoulou

Purpose of Report

1. For information and discussion.

Relevance to the Council Plan

2. The draft Independent Living Strategy supports delivery of objectives set out in Enfield Council's Corporate Plan (2018-2022).
3. It supports *Good homes in well-connected neighbourhoods* by providing an opportunity to listen to what our residents need and use this information to improve our services
4. It supports *Sustaining strong and healthy communities* by setting out priorities to supporting those most in need by delivering services and safeguarding measures they rely on. It sets out our partnership, strength based approach to supporting as many people as possible to live independent lives and incorporates priorities that will help improve public health and wellbeing.
5. It supports *Building our local economy to create a thriving place* through the inclusion of specific priorities and actions in respect of reducing inequalities.

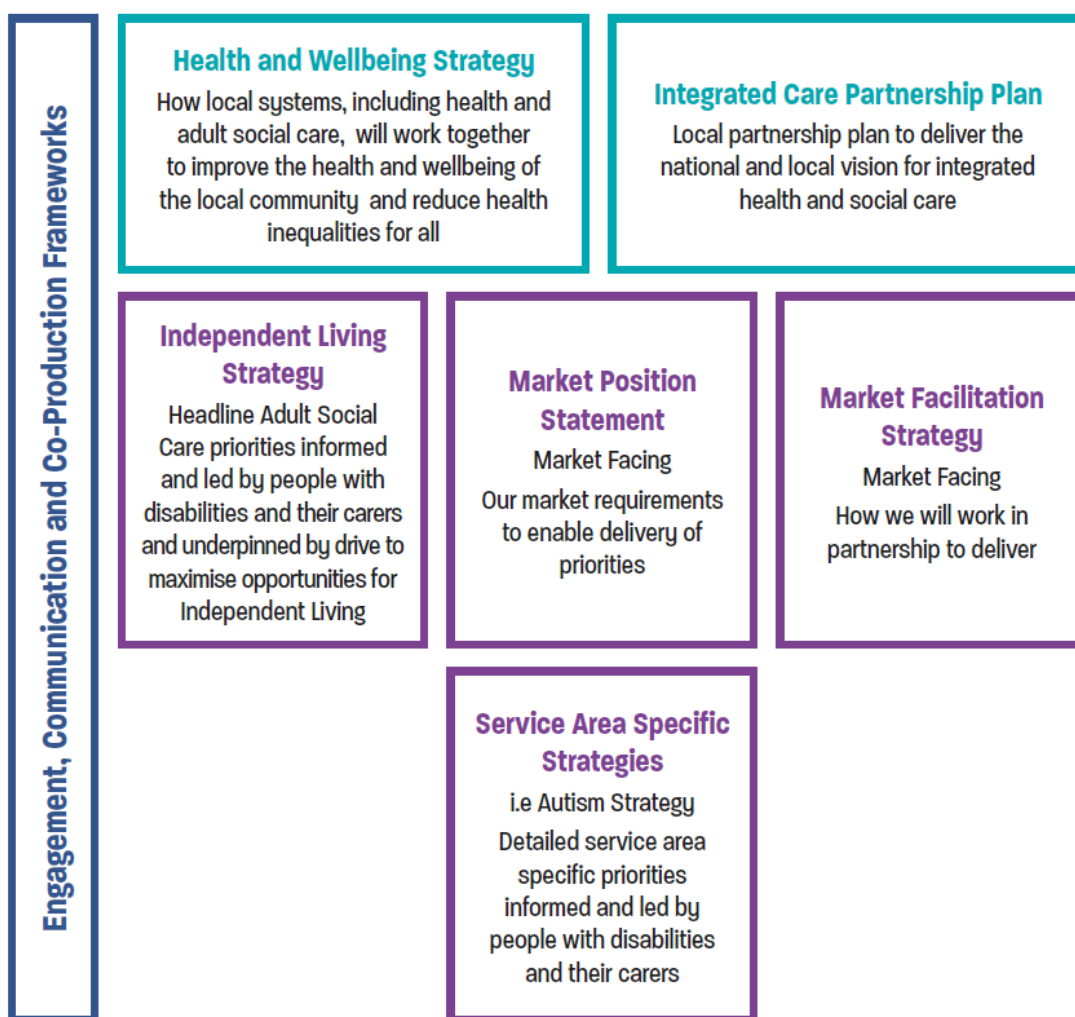
Background

Purpose & Scope of Independent Living Strategy

6. The purpose of this strategy is to set out headline priorities for supporting independent living for young people in transition to adulthood, adults (18-64 years) and older people (65+) with adult social care needs in Enfield over the next five years (2023-2027).
7. Recognising that barriers to living independently reach beyond adult social care, the strategy first considers universal themes that can impact a person's opportunity to live independently, including information and advice, health and housing. It also considers growing opportunities to enhance independent living through the use of digital technology – a landscape of opportunity that continues to evolve.

8. The latter section of this strategy focuses on specific priorities for supporting independent living, according to need. These 'In Focus' areas include specific consideration of:
 - People with learning disabilities
 - Autistic people
 - People with mental health support needs
 - Older people with care and support needs
 - People with physical and/or sensory impairment
 - People with long term conditions
 - Unpaid carers

9. The Independent Living Strategy is intended to complement existing strategies and contribute to a wholistic portfolio of documents, that set out, in partnership with people who need support and their carers, what we need locally to better support independent living and how we will work with the stakeholders to deliver.



Working Together to Shape a Draft Independent Living Strategy

10. The draft Independent Living Strategy has been shaped through early engagement with service users, carers and representatives of our voluntary and community through our Partnership Boards and subsequent Focus Groups (See Appendix 1: Engagement Log).
11. Engagement will continue over an eight week Public Consultation period (ending 7th April 2023). Feedback shall be encouraged by return of an online or hard copy questionnaire (easy read versions available) or attendance at one of four drop-in events scheduled to be held in the borough.
12. The opportunity to inform and shape the draft strategy has been further promoted through:
 - The Community Development Team e-bulletin, reaching circa 800 voluntary and community sector organisations
 - Direct circulation to key Voluntary & Community Sector Organisations known to Adult Social Care.

Action Plan, Governance & Review

13. Feedback from completed engagement and consultation activity shall inform the development of a final version of the Independent Living Strategy. An Action Plan shall accompany the final version of the Independent Living Strategy. This will include Year 1 Actions and Measures of Success. An early draft of the Action Plan is included in Appendix 5. This will be developed further with Partnership Board involvement, following completion of the Public Consultation Period on 7th April.
14. Ongoing governance of the completed strategy shall be through the Joint Health & Adult Social Care Board, with a reporting line to the Health & Wellbeing Board and annual updates to Partnership Boards.

Main Considerations for the Panel

15. Scrutiny Panel are asked to consider the full draft Independent Living Strategy and provide feedback to inform the final version.

Conclusions

16. The development of an Independent Living Strategy provides the opportunity to set out, in partnership with people who use health and social care services and their carers, local priorities for action to support independent living, in line with the recent Adult Social Care Reform White Paper 'People at the Heart of Care' and Department of Health & Social Care White Paper 'Integration & Innovation: Working Together to Improve Health and Social Care for All.'

Report Author: Lia Markwick

Service Development Manager
lia.markwick@enfield.gov.uk
0208 3796148

Date of report: 24/02/23

Appendices

Appendix 1: Engagement Log

Appendix 2: EQIA

Appendix 3: Draft Independent Living Strategy – Summary

<https://www.enfield.gov.uk/consultations/independent-living-strategy>

Appendix 4: Draft Independent Living Strategy – Full

<https://www.enfield.gov.uk/consultations/independent-living-strategy>

Appendix 5: Draft Action Plan

Background Papers

N/A